

**THE
COMMONWEALTH OF THE
BAHAMAS**

**VITAL STATISTICS
REPORT
2013**

**Department of Statistics
Ministry of Finance
P.O. Box N-3904
Nassau, NP
The Bahamas**

PREFACE

The annual report of vital statistics is produced by the Department of Statistics from registered vital events of the Registrar General's Department. This includes births, deaths, and marriages for 2013. Statistical information on divorces was compiled from the records of the Supreme Court Registry. However, divorces presented in this report are limited to the yearly aggregates.

National registration of vital events such as births and deaths became mandatory within the legal framework of this country over two centuries ago. Statistical tabulations of births and deaths in The Bahamas which date back to the 1940s were produced by the Registrar General's Department (Civil Registry). In 1968, the Department of Statistics was established by law. As a result, all statistical reporting of vital events and other data became the responsibility of the Department.

The Department of Statistics maintains a close working relationship with the Ministry of Health, as it pertains to a number of vital statistics occurrences such as the annual census of live births. Crude rates such as infant mortalities and stillbirths are estimated on the number of occurrences. These annual percentages and rates are key when measuring demographic changes.

Historically, the annual registration of births in The Bahamas has lagged more than 30%. In recent years the percentage of births registered has increased considerably. This is due in part to technological improvements. In 2013, the country recorded 4,441 live births of which 4,330 were registered, resulting in an under registration of 2.5% or 111 live births that were not registered and are therefore not included in the live-birth analysis of this report.

July 2016

**Leona Wilson
Acting Director of Statistics**

ACKNOWLEDGEMENTS

Acknowledgements are due first to the Registrar General and Staff of the Registrar General's Department, especially Mr. Wellington Smith of the Data Management Section. Thanks also to the Ministry of Health, particularly Ms. Camille Deleveaux in the Health Information & Research Unit. A debt of gratitude is extended to the Staff of the Supreme Court Family Registry for their support. To users of vital statistics data, thank you for making our efforts meaningful.

Expressions of thanks and appreciation are acknowledged for the Staff of the Department of Statistics whose combined contributions made this publication possible.

Freeport, Grand Bahama Office:

Clara Lowe & Staff

Data Processing Section:

Evangeline Bowleg

Vital Statistics Section:

Violet Duncombe

Lillian Lightbourne

Patrice Hanna

Persephone Sweeting-Rollins

Christa Conyers

DATA NOTES & EXPLANATIONS

Age Group	Single years of age are assembled for the purposes of data presentation and analysis.
Age-Specific Rate	Rate obtained for specific age group of the population.
Birth	Live births.
Country of Birth	Country where mother was born.
Birth Order	The sequence of births (also called parity) to a woman from the first to the last birth.
Crude Rate	Crude rates for live births, deaths, infant deaths and stillbirths and estimated on the number of occurrences reported for the year. Crude rates for deaths and marriages are based on the registered account.
Median Age	The age at which half the population is younger and half is older.
Note	All death tables with the exception of Table 15 exclude stillbirths.

SYMBOL

N. A.	Not Available.
R	Revised.
(‘000)	Thousands
UND	Under

HIGHLIGHTS OF VITAL EVENTS: 2013

LIVE BIRTHS

- Live-birth occurrences in The Bahamas declined 8.7% over the previous year from 4,866 in 2012 to 4,441 in 2013. A review of the data revealed a steady decrease in the crude birth rate, from a high of 17.1 in 2005 to 12.3 in 2013, resulting in a decline of 4.8 percentage points over the period (Table 1).
- Unwed mothers continued to account for the majority of live- births in 2013, representing 62% of total live- births. However, when live- births to unwed mothers by age- group was examined, the data revealed that 32.8% of the births were to mothers 20-24 years and 23.2% were to mothers 25-29 years (Table 13).
- Almost all (98%) of the teen mothers giving birth in 2013 were not married.
- Three quarters of all registered births were to mothers residing on the island of New Providence (Table 11).
- Births to non-Bahamian mothers registered 15% of total births. Almost three quarters (73.1%) of these births were to mothers of Haitian origin (Table 2).
- The sex ratio at birth showed a five point decline in male births, from 104 males for every 100 female births in 2012 to 99 males for every 100 females in 2013.

DEATHS

- The overall number of deaths that occurred in The Bahamas in 2013 was 2,115; an increase of 4% from the total number of deaths that occurred in 2012. This resulted in a crude death rate of 5.8 (Table 1)

- Historically male mortalities have been higher than female mortalities and this trend holds for 2013 with 1,139 male deaths and 926 female deaths.
- Hypertensive and heart diseases remained the major causes of death among the population. The second largest number of deaths among the population was to persons with cancer. Cancer of the breast, colon and prostate were the three leading causes of cancer deaths accounting for 58% of all cancer deaths in 2013 (Table 10).
- Accidents, suicides and homicides accounted for 255 deaths (Tables 5 & 6) and continued to be the third leading cause of death in The Bahamas, resulting in a 6.7% increase over the previous year's figure of 240 deaths to this category.
- The Infant mortality rate continued to fluctuate falling from 19.8 in 2010 to 16.2 in 2011; then increasing to 19.1 and 22.7 in 2012 and 2013 respectively.
- A similar pattern is seen in the stillbirths, increasing from a rate of 12.1 in 2010 to 14.4 in 2011, then decreasing to 12.0 in 2012 and increasing to 13.5 in 2013 (Table 1).

MARRIAGES

- In 2013 there were 2,122 marriages recorded in The Bahamas. This showed an increase of 9.3% from the previous year, resulting in a crude marriage rate of 5.8 for the year under review. (Table 1)

TABLE OF CONTENTS

	Page No
PREFACE	i
ACKNOWLEDGEMENTS	ii
DATA NOTES & EXPLANATIONS	iii
HIGHLIGHTS OF VITAL EVENTS	iv-v
TABLE OF CONTENTS	vi-vii

SUMMARY OF VITAL EVENTS

TABLE NO.		
1	Summary of Vital Statistics, All Bahamas: 2005 – 2013	1
2	Registered Live-Births by Age-Group, Birth Place of Mother And Sex of Child, All Bahamas: 2010 – 2013	2-3
3	Age-Specific Mortality Rates by Sex, Based on Registered Deaths, All Bahamas: 2013	4
4	Registered Live-Births and Death by Island of Occurrence, All Bahamas: 2008 – 2013	5
5	Major Causes of Death by Number and Percentage Distribution Within Selected Islands, Males: 2013	6
6	Major Causes of Death by Number and Percentage Distribution Within Selected Islands, Females: 2013	7
7	Age-Specific Fertility Rates, Based on Live-Births by Occurrence, All Bahamas: 2011 – 2013	8
8	Fertility and Reproduction Rates, All Bahamas: 2001 – 2013	9
9	Registered Deaths by Age-Group and Sex, All Bahamas 2006-2013	10
10	Registered Deaths by Cause and Sex of Deceased, All Bahamas, 2010 – 2013	11-12

SECTION I – LIVE BIRTHS

11	Registered Live-Births by Usual Residence and Age-Group of Mother, All Bahamas: 2013	13
12	Registered Live-Births by Month, Sex and Usual Residence of Mother, All Bahamas: 2013	14
13	Registered Live-Births by Selected Islands, Age-Group and Marital Status of Mother, All Bahamas: 2013	15
14	Registered Live-Births by Birth Order and Age-Group of Mother, All Bahamas: 2013	16

TABLE OF CONTENTS

TABLE NO.		PAGE NO
SECTION II – INFANT DEATHS		
15	Registered Stillbirths and Infant Deaths by Duration of Life, Island And Month of Occurrence, All Bahamas: 2013	17
16	Registered Infant Deaths by Cause, Sex and Duration of Life, All Bahamas: 2013	18
SECTION III – DEATHS		
17	Registered Deaths by Usual Residence, Sex and Age Group Of Deceased, All Bahamas: 2013	19-20
18	Registered Deaths by Cause and Age-Group of Deceased Males, All Bahamas: 2013	21-22
19	Registered Deaths by Cause and Age-Group of Deceased Females, All Bahamas: 2013	23-25
SECTION IV – MARRIAGES		
20	Marriages by Island and Month of Occurrence, All Bahamas: 2013	26
21	Marriages by Previous Marital Status of Bride and Bridegroom, All Bahamas: 2013	27
22	Marriages by Age-Group of Bride and Bridegroom, All Bahamas: 2013	28
CHARTS		
I	Selected Vital Events Rates, All Bahamas: 2009 – 2013	29
II	Registered Live Births and Death, All Bahamas: 2010 – 2013	30
III	Age-Specific Fertility Rates Based on Live Births by Occurrences, All Bahamas: 2012 – 2013	31
IV	Major Cases of Death by Percentage Distribution, All Bahamas: 2013	32
V	Major Causes of Death, New Providence and Grand Bahama: 2013	33
APPENDIX – Definitions		34-37

**SUMMARY OF VITAL
EVENTS**

SUMMARY OF VITAL STATISTICS, ALL BAHAMAS: 2005 – 2013

TABLE 1

ITEM	2005	2006	2007	2008	2009	2010	2011	2012	2013
POPULATION ('000)*	325	330	334	338	342	351(a)	355R	358R	362
LIVE BIRTHS	5,548	5,296	5,854	5,480	5,348	5,049	5,000	4866	4,441
CRUDE RATE++	17.1	16.0	17.5	16.2	15.6	14.4	14.1R	13.6R	12.3
DEATHS	1,824	1,730	1,798	1,863	2,021	2,056	2,150	2,029	2,115
CRUDE RATE++	5.6	5.2	5.4	5.5	5.9	5.8	6.1	5.7	5.8
NATURAL INCREASE	3,724	3,566	4,056	3,617	3,327	2,993	2,850	2,837	2,326
CRUDE RATE++	11.5 R	10.8	12.1	10.7	9.7	8.6	7.9	7.7	6.5
INFANT DEATHS	109	96	103	98	113	100	81	93	101
CRUDE RATE**	19.6	18.1	17.6	17.9	21.1	19.8	16.2	19.1	22.7
STILL BIRTHS	86	72	83	82	74	62	73	59	61
CRUDE RATE**	15.5 R	13.6 R	14.2 R	15.0	13.8	12.1	14.4	12.0	13.5
NEONATAL DEATHS	70	64	78	55	46	42	49	60	53
CRUDE RATE**	12.6	12.1	13.3	10.0	8.6	8.3	9.8	12.3	11.9
PERINATAL DEATHS	150	130	150	111	105	102	103	98	94
CRUDE RATE**	27.1	24.5	25.6	20.3	19.6	20.2	20.6	20.1	21.2
MALE MEDIAN AGE	28	28	28	29	29	29	25	29	29
FEMALE MEDIAN AGE	30	30	30	31	31	30	28	31	31
% UNDER 15	27.5	27.0	26.5	26.0	26.0	26.8	29.7	25.6	25.3
% ELDERLY 65 AND OVER	5.5	5.6	5.8	5.8	6.0	6.2	4.9	6.3	6.3
MARRIAGES	2,508	2,599	2,021	1,969	1,974	1,939	2,204	1,941	2122
CRUDE RATE++	9.0	7.9	6.1	5.8	5.8	5.5	6.2	5.3	5.8
DIVORCES AND ANNULMENTS	N.A.	433	333	245	603	N/A	N/A	N/A	N/A
CRUDE RATE++	325	1.3	1.0	0.7 P	1.8P				
	325	330	334	338	342				

* Mid-year Population projection

++ Crude Rate per 1,000 population

** Crude Rate per 1,000 Live births

R - Revised

P - Provisional

(a)-2010 Census Data

N/A-Not Available

1 .All rates relative to Live-births, Infant Deaths and Stillbirths are calculated based on estimated occurrences.

2. Registered Live-birth, Death and Marriage totals in the Summary Table, may differ from the registered Live-birth and Death totals within the report, due to accumulated late registrations which are added to the Summary Table totals only.

REGISTERED LIVE-BIRTHS BY AGE GROUP, BIRTH PLACE OF MOTHER AND SEX OF CHILD, ALL BAHAMAS: 2010- 2013

TABLE 2

YEAR AND BIRTH PLACE OF MOTHER	AGE GROUP OF MOTHER AND SEX OF CHILD																					
	TOTAL		10 - 14		15 - 19		20 - 24		25 - 29		30 - 34		35 - 39		40 - 44		45 - 49		50 AND OVER		NOT STATED	
	M	F	M	F	M	F	M	F	M	F	M	F	M	F	M	F	M	F	M	F	M	F
2010																						
BAHAMAS	2,126	1,995	7	5	286	249	537	485	539	513	408	432	270	237	70	73	7	1	-	-	-	-
HAITI	271	279	-	-	10	5	28	50	76	71	90	93	45	45	20	15	2	-	-	-	-	
JAMAICA	84	93	-	-	5	4	14	18	17	19	24	23	16	19	7	8	-	2	-	-	-	
OTHER CARIBBEAN COUNTRIES	13	16	1	-	-	-	-	2	5	4	1	3	6	7	1	-	-	-	-	-	-	
OTHER FOREIGN COUNTRIES	20	17	-	-	1	-	1	-	2	5	7	3	7	8	1	1	1	-	-	-	-	
NOT STATED	-	1	-	-	-	-	-	-	-	-	-	1	-	-	-	-	-	-	-	-	-	
TOTAL	2,514	2,401	8	5	302	258	580	555	639	612	530	555	344	316	101	97	10	3	-	-	-	
2011																						
BAHAMAS	1983	2013	2	3	232	243	376	371	588	609	336	333	347	386	58	40	44	28	-	-	-	-
HAITI	285	266	-	-	10	6	32	37	70	82	77	61	77	62	12	11	7	7	-	-	-	
JAMAICA	99	97	-	-	3	1	10	14	26	21	21	16	31	39	5	2	3	4	-	-	-	
OTHER CARIBBEAN COUNTRIES	7	7	-	-	-	-	-	-	2	1	1	3	3	-	1	3	-	-	-	-	-	
OTHER FOREIGN COUNTRIES	-	-	-	-	-	-	-	-	-	-	-	-	-	-	-	-	-	-	-	-	-	
NOT STATED	-	-	-	-	-	-	-	-	-	-	-	-	-	-	-	-	-	-	-	-	-	
TOTAL	2374	2383	2	3	245	250	418	598	686	713	435	413	458	487	76	56	54	39	-	-	-	

REGISTERED LIVE-BIRTHS BY AGE GROUP, BIRTH PLACE OF MOTHER AND SEX OF CHILD, 2010- 2013

TABLE 2 Cont'd

YEAR AND BIRTH PLACE OF MOTHER	AGE GROUP OF MOTHER AND SEX OF CHILD																					
	TOTAL		10 - 14		15 - 19		20 - 24		25 - 29		30 - 34		35 - 39		40 - 44		45 - 49		50 AND OVER		NOT STATED	
	M	F	M	F	M	F	M	F	M	F	M	F	M	F	M	F	M	F	M	F	M	F
2012																						
BAHAMAS	1921	1859	2	2	245	227	474	462	497	471	384	370	247	239	70	83	2	5	-	-	-	-
HAITI	268	234	-	-	12	7	35	30	64	50	84	81	55	47	15	15	3	4	-	-	-	-
JAMAICA	79	85	-	-	4	2	15	12	20	17	21	24	15	26	4	4	-	-	-	-	-	-
OTHER CARIBBEAN COUNTRIES	12	11	-	-	-	-	1	-	1	4	8	1	1	4	1	1	-	1	-	-	-	-
OTHER FOREIGN COUNTRIES	-	-	-	-	-	-	-	-	-	-	-	-	-	-	-	-	-	-	-	-	-	-
NOT STATED	-	-	-	-	-	-	-	-	-	-	-	-	-	-	-	-	-	-	-	-	-	-
TOTAL	2280	2189	2	2	261	236	525	504	582	542	497	476	318	316	90	103	5	10	-	-	-	-
2013																						
BAHAMAS	1831	1829	4	1	214	220	474	478	475	438	371	393	226	231	61	67	6	1	-	-	-	-
HAITI	236	261	-	-	5	9	32	38	59	54	65	69	56	69	19	21	-	1	-	-	-	-
JAMAICA	78	76	-	-	2	-	13	11	22	27	11	18	24	14	6	6	-	-	-	-	-	-
OTHER CARIBBEAN COUNTRIES	9	10	-	-	-	-	2	-	2	3	1	2	3	3	1	1	-	1	-	-	-	-
OTHER FOREIGN COUNTRIES	-	-	-	-	-	-	-	-	-	-	-	-	-	-	-	-	-	-	-	-	-	-
NOT STATED	-	-	-	-	-	-	-	-	-	-	-	-	-	-	-	-	-	-	-	-	-	-
TOTAL	2154	2176	4	1	221	229	521	527	558	522	448	482	309	317	87	95	6	3				

**AGE-SPECIFIC MORTALITY RATES BY SEX, BASED ON
REGISTERED DEATHS, ALL BAHAMAS: 2013**

TABLE 3

AGE-GROUP	MALES			FEMALES		
	POPULATION	DEATHS	DEATH RATE	POPULATION	DEATHS	DEATH RATE
0	2,720	26	9.6	2,640	25	9.5
1	2,780	4	1.4	2,740	2	0.7
2	2,840	6	2.1	2,840	1	0.4
3	2,910	4	1.4	2,930	-	-
4	2,990	1	0.3	3,030	-	-
5 - 9	15,550	5	0.3	15,870	5	0.3
10 - 14	15,870	7	0.4	16,110	3	0.2
15 - 19	15,980	26	1.6	15,920	8	0.5
20 - 24	14,700	39	2.7	14,530	13	0.9
25 - 29	12,680	39	3.1	13,450	9	0.7
30 - 34	12,820	40	3.1	14,150	34	2.4
35 - 39	13,650	48	3.5	14,820	31	2.1
40 - 44	13,530	61	4.5	14,790	30	2
45 - 49	12,370	97	7.8	13,340	47	3.5
50 - 54	10,840	95	8.8	11,940	72	6
55 - 59	7,630	96	12.6	8,800	76	8.6
60 - 64	5,370	81	15.1	6,130	63	10.3
65 - 69	3,920	96	24.5	4,670	68	14.6
70 - 74	2,820	103	36.5	3,640	82	22.5
75 - 79	1,680	110	65.5	2,290	101	44.1
80 - 84	906	74	81.7	1,326	91	68.6
85 - 89	376	48	127.7	662	83	125.4
90 +	188	33	175.5	492	82	166.7
NOT STATED	-	-	-	-	-	-
TOTAL	175,120	1,139	6.5	187,110	926	4.9

NOTE: Population totals may be off due to rounding.

REGISTERED LIVE-BIRTHS AND DEATHS BY ISLAND OF OCCURRENCE, ALL BAHAMAS: 2008 - 2013

TABLE 4

ISLAND OF OCCURRENCE	2008		2009		2010		2011		2012		2013	
	LIVE BIRTHS	DEATHS	LIVE BIRTHS	DEATHS	LIVE BIRTHS	DEATHS	LIVE BIRTHS	DEATHS	LIVE BIRTHS	DEATHS	LIVE BIRTHS	DEATHS
NEW PROVIDENCE	4,355	1,488	4,225	1,615	4,114	1,628	4,020	1,676	3,741	1,607	3,230	1,653
GRAND BAHAMA	755	277	790	242	792	236	722	271	717	222	638	253
ABACO	5	40	5	44	1	39	9	33	5	57	200	37
ACKLINS	-	2	-	2	-	-	-	-	-	1	7	1
ANDROS	-	9	1	16	2	22	1	21	1	17	55	25
BERRY ISLANDS	-	-	-	3	1	2	-	-	-	3	7	2
BIMINI	-	6	-	9	1	13	-	7	1	6	8	13
CAT ISLAND	-	6	-	2	-	1	-	2	-	5	6	5
CROOKED ISLAND	-	5	-	1	-	1	-	-	-	2	2	2
ELEUTHERA	-	27	2	29	3	20	1	26	-	23	85	21
EXUMA AND CAYS	2	14	1	16	1	24	1	23	-	17	50	12
HARBOUR ISLAND	-	3	1	9	-	8	1	11	1	11	9	10
INAGUA	-	1	-	3	-	5	-	8	-	1	6	3
LONG ISLAND	-	19	1	17	-	11	2	13	-	9	11	18
MAYAGUANA	-	-	-	-	-	1	-	-	-	-	1	3
RAGGED ISLAND	-	-	-	-	-	-	-	1	-	1	1	1
SAN SALVADOR AND RUM CAY	-	2	1	4	-	1	-	6	-	1	10	1
SPANISH WELLS	-	14	-	9	-	11	-	17	-	10	2	5
NOT STATED	7	-	-	-	-	-	-	-	3	-	2	-
TOTAL	5,124	1,863	5,027	2,021	4,915	2,023	4,757	2,117	4,469	1,993	4,330	2,065

MAJOR CAUSES OF DEATH BY NUMBER AND PERCENTAGE DISTRIBUTION WITHIN SELECTED ISLANDS, MALES: 2013

TABLE 5

ISLAND (USUAL RESIDENCE)	TOTAL ALL CAUSES		HEART DISEASES (I00-I15, I20-I51)		(CANCER) (C00-D48)		IMMUNODEFICIENCY VIRUS [HIV] (B20-B24)		SUICIDE & HOMICIDE (V01-Y89)		DIABETES MELLITUS (E10-E14)		CEREBROVASCULAR DISEASE (I60-I69)		ALL OTHER DISEASES	
	DEATHS	%	DEATHS	%	DEATHS	%	DEATHS	%	DEATHS	%	DEATHS	%	DEATHS	%	DEATHS	%
NEW PROVIDENCE	794	100	173	22	123	16	46	6	154	19	34	4	55	7	209	26
GRAND BAHAMA	156	100	28	18	39	25	8	5	24	15	3	2	10	7	44	28
ABACO	35	100	10	28	7	20	3	9	5	14	3	9	3	9	4	11
ANDROS	22	100	7	32	3	14	-	-	2	9	1	4	-	-	9	41
ELEUTHERA	25	100	2	8	8	32	2	8	6	24	-	-	-	-	7	28
EXUMA	12	100	4	34	1	8	-	-	1	8	1	8	2	17	3	25
LONG ISLAND	17	100	1	6	7	41	-	4	-	-	2	12	-	-	7	41
REST OF BAHAMAS	33	100	15	46	5	15	1	3	3	9	1	3	3	9	5	15
ABROAD	45	100	19	42	4	9	1	2	14	31	1	2	-	-	6	14
TOTAL	1,139	100	259	23	197	17	61	5	209	18	46	4	73	7	294	26

MAJOR CAUSES OF DEATH BY NUMBER AND PERCENTAGE DISTRIBUTION WITHIN SELECTED ISLANDS, FEMALES: 2013

TABLE 6

ISLAND (USUAL RESIDENCE)	TOTAL ALL CAUSES		HEART DISEASES (I00-I15, I20-I51)		(CANCER) (C00-D48)		IMMUNODEFICIENCY VIRUS [HIV] (B20-B24)		SUICIDE & HOMICIDE (V01-Y89)		DIABETES MELLITUS (E10-E14)		CEREBROVASCULAR DISEASE (I60-I69)		ALL OTHER DISEASES	
	DEATHS	%	DEATHS	%	DEATHS	%	DEATHS	%	DEATHS	%	DEATHS	%	DEATHS	%	DEATHS	%
NEW PROVIDENCE	655	100	133	20	152	23	43	7	29	4	37	6	48	7	213	33
GRAND BAHAMA	123	100	21	17	35	28	10	8	6	5	4	3	12	10	35	29
ABACO	20	100	2	10	6	30	-	-	-	-	2	10	4	20	6	30
ANDROS	20	100	3	15	3	15	1	5	1	5	3	15	1	5	8	40
ELEUTHERA	26	100	7	27	5	19	3	12	1	4	3	11	2	8	5	19
EXUMA	16	100	3	19	5	31	-	-	-	-	2	13	-	-	6	37
LONG ISLAND	11	100	1	9	1	9	1	9	-	-	2	18	1	9	5	46
REST OF BAHAMAS	32	100	6	19	6	19	-	-	4	12	3	9	5	16	8	25
ABROAD	23	100	8	35	2	9	1	4	6	26	-	-	-	-	6	26
TOTAL	926	100	184	20	215	23	59	6	46	5	56	6	73	8	292	32

**AGE-SPECIFIC FERTILITY RATES,
BASED ON LIVE-BIRTHS BY OCCURRENCE,
ALL BAHAMAS: 2011 – 2013**

TABLE 7

AGE GROUP	2011R			2012R			2013		
	Number of Women	Number of Live Births Occurrence	Age-Specific Fertility Rate	Number of Women	Number of Live Births Occurrence	Age-Specific Fertility Rate	Number of Women	Number of Live Births Occurrence	Age-Specific Fertility Rate
15 - 19	15,730	520	33.3	15,860	545	33.3	15,920	462	29
20 - 24	13,630	883	60.3	14,040	1121	60.3	14,530	1075	72.1
25 - 29	13,800	1,471	111	13,630	1,225	111	13,450	1108	82.4
30 - 34	14,050	891	69.1	14,080	1,060	69.1	14,150	954	67.4
35 - 39	15,200	993	69.4	15,050	691	69.4	14,820	642	43.3
40 - 44	13,990	139	9.8	14,380	210	9.8	14,790	187	12.6
45 - 49	13,210	98	7.1	13,300	16	7.1	13,340	9	0.67
TOTAL	99,610	4,995		100,340	4,865		101,000	4,437	

Note: Figures for 2011 and 2012 were revised.

FERTILITY AND REPRODUCTION RATES, All Bahamas: 2001 - 2013

TABLE 8

YEAR	GENERAL FERTILITY RATE (GFR)	TOTAL FERTILITY RATE (TFR)	GROSS REPRODUCTION RATE (GRR)	NET REPRODUCTION RATE (NRR)
2001	60.90	1.995	1.00	0.94
2002	58.16	1.925	0.97	0.95
2003	55.65	1.875	0.92	0.89
2004	55.59	1.900	0.95	0.92
2005	50.00	2.050	1.01	0.99
2006	55.43	1.925	0.99	0.95
2007	61.08 R	2.140 R	0.92	0.89
2008	56.67	1.995	1.02	0.99
2009	57.70	2.025	1.02	0.98
2010	52.41	1.825	0.89	0.86
2011	50.10R	1.750R	0.98R	0.95R
2012	48.50R	1.705R	0.83R	0.81R
2013	43.97	1.535	0.76	0.75

Note: Rates for 2011 and 2012 were revised

REGISTERED DEATHS BY AGE-GROUP AND SEX, ALL BAHAMAS: 2006 - 2013

TABLE 9

AGE-GROUP	2006		2007		2008		2009		2010		2011		2012		2013	
	M	F	M	F	M	F	M	F	M	F	M	F	M	F	M	F
6 DAYS OR LESS	18	12	13	18	22	7	13	18	14	13	9	9	10	8	8	9
7 - 27 DAYS	14	9	12	9	7	4	10	6	9	6	8	3	8	11	3	7
28 DAYS OR MORE BUT LESS THAN 3 MONTHS	5	6	4	4	9	6	3	9	6	2	2	5	6	6	7	7
3 MONTHS OR MORE BUT LESS THAN 6 MONTHS	4	6	3	3	6	6	6	2	7	4	4	3	1	4	4	2
6 MONTHS OR MORE BUT LESS THAN 9 MONTHS	1	3	1	-	1	1	-	2	2	2	1	1	1	1	2	1
9 MONTHS OR MORE BUT LESS THAN 1 YEAR	-	1	-	2	2	-	-	2	1	1	2	1	-	1	2	-
1	5	2	2	1	4	2	2	4	2	3	5	3	5	5	4	2
2	1	-	-	1	3	-	-	-	1	2	1	1	2	1	6	1
3	-	-	1	-	3	3	2	1	1	4	3	1	-	1	4	-
4	-	-	-	1	-	-	1	1	1	-	-	1	3	1	1	-
5 - 9	4	5	7	4	3	-	2	2	4	2	2	7	5	4	5	5
10 - 14	4	3	6	3	7	3	8	-	4	1	5	9	6	2	7	3
15 - 19	13	12	23	4	17	6	24	7	18	7	12	17	17	10	26	8
20 - 24	31	10	26	13	27	13	41	10	39	11	41	14	42	15	39	13
25 - 29	29	28	40	14	41	10	38	19	34	7	55	25	42	7	39	9
30 - 34	51	18	40	20	37	21	40	30	39	30	58	23	52	20	40	34
35 - 39	51	38	66	43	57	30	67	31	71	37	57	25	47	37	48	31
40 - 44	73	42	66	39	65	48	76	37	69	48	68	45	57	42	61	30
45 - 49	63	49	76	54	75	49	91	47	77	50	88	53	72	58	97	47
50 - 54	71	56	97	41	95	57	89	54	74	58	95	70	84	75	95	72
55 - 59	65	43	68	48	68	47	71	43	92	65	86	57	95	53	96	76
60 - 64	79	52	79	46	71	47	79	63	89	59	92	71	83	66	81	63
65 - 69	68	53	87	72	85	68	99	73	92	72	102	78	87	60	96	68
70 - 74	86	82	86	64	102	78	100	79	103	73	101	68	95	88	103	82
75 - 79	76	78	70	74	77	81	91	105	94	91	100	93	92	84	110	101
80 - 84	70	71	46	76	61	88	65	88	68	93	73	101	81	88	74	91
85 - 89	33	61	44	70	47	82	63	81	41	72	61	81	61	55	48	83
90 - 94	21	33	26	46	22	46	23	53	39	74	30	42	30	60	18	42
95 - 99	4	15	9	23	7	25	8	36	14	19	17	23	5	30	11	30
100 +	-	2	1	4	1	4	1	5	3	9	3	6	2	9	4	10
NOT STATED	-	-	2	-	4	5	-	-	-	-	-	-	-	-	-	-
TOTAL	940	790	1,001	797	1,026	837	1,113	908	1108	915	1181	936	1091	902	1139	926

REGISTERED DEATHS BY CAUSE AND SEX OF DECEASED, ALL BAHAMAS: 2010 - 2013

TABLE 10

GENERAL MORTALITY SELECTED LIST 2	LIST OF CAUSES FOR TABULATION OF MORTALITY, TENTH REVISION OF THE INTERNATIONAL CLASSIFICATION OF DISEASES	2010			2011			2012			2013		
		BOTH SEXES	MALE	FEMALE	BOTH SEXES	MALE	FEMALE	BOTH SEXES	MALE	FEMALE	BOTH SEXES	MALE	FEMALE
2-002	Diarrhoea and Gastroenteritis of Presumed Infectious Origin	5	3	2	5	5	-	2	1	1	3	2	1
2-003	Other Intestinal Infectious Diseases	-	-	-	-	-	-	-	-	-	-	-	-
2-004	Respiratory Tuberculosis	2	1	1	3	1	2	1	-	1	2	1	1
2-005	Other Tuberculosis	-	-	-	2	1	1	-	-	-	-	-	-
2-010	Meningococcal Infection	1	-	1	-	-	-	1	-	1	-	-	-
2-011	Septicaemia	30	19	11	34	14	20	47	19	28	56	27	29
2-016	Other Arthropod-Borne Viral Fevers and Viral Hemorrhagic Fever	-	-	-	3	1	2	-	-	-	-	-	-
2-018	Viral Hepatitis	2	2	-	3	2	1	4	2	2	-	-	-
2-019	Human Immunodeficiency Virus [HIV] Disease	102	61	41	121	68	53	109	60	49	120	61	59
2-024	Remainder of Certain Infectious and Parasitic Diseases	4	1	3	6	1	5	9	7	2	6	4	2
2-025	Malignant Neoplasm of Lip Oral Cavity and Pharynx	9	7	2	5	4	1	12	8	4	6	5	1
2-026	Malignant Neoplasm of Oesophagus	16	14	2	10	9	1	7	7	-	7	5	2
2-027	Malignant Neoplasm of Stomach	17	11	6	21	14	7	8	5	3	23	12	11
2-028	Malignant Neoplasm of Colon Rectum, and Anus	30	19	11	42	22	20	31	18	13	53	30	23
2-029	Malignant Neoplasm of Liver and Intrahepatic Bile Ducts	7	5	2	15	8	7	14	11	3	8	6	2
2-030	Malignant Neoplasm of Pancreas	9	5	4	11	5	6	8	4	4	10	8	2
2-031	Malignant Neoplasm of Larynx	5	4	1	6	6	-	6	5	1	3	3	-
2-032	Malignant Neoplasm of Trachea Bronchus and Lung	36	24	12	36	27	9	24	16	8	24	14	10
2-033	Malignant Melanoma of Skin	3	1	2	1	1	-	1	1	-	2	-	2
2-034	Malignant Neoplasm of Breast	67	-	67	61	1	60	53	1	52	65	2	63
2-035	Malignant Neoplasm of Cervix Uteri	15	-	15	13	-	13	18	-	18	23	-	23
2-036	Malignant Neoplasm of Other and Unspecified Parts of Uterus	8	-	8	11	-	11	10	-	10	16	-	16
2-037	Malignant Neoplasm of Ovary	7	-	7	7	-	7	12	-	12	10	-	10
2-038	Malignant Neoplasm of Prostate	47	47	-	52	52	-	62	62	-	42	42	-
2-039	Malignant Neoplasm of Bladder	3	1	2	6	3	3	2	2	-	5	4	1
2-040	Malignant Neoplasm of Meninges Brain & Other Parts of the Central Nervous System	5	3	2	7	5	2	4	2	2	5	2	3
2-041	Non-Hodgkin's Lymphoma	11	5	6	8	6	2	9	6	3	7	5	2
2-042	Multiple Myeloma and Malignant Plasma Cell Neoplasms	11	3	8	10	7	3	15	5	10	13	6	7
2-043	Leukaemias	11	9	2	7	3	4	8	3	5	11	6	5
2-044	Remainder of Malignant Neoplasms	58	29	29	60	36	24	63	33	30	65	37	28
2-045	Anaemias	12	7	5	24	16	8	10	4	6	14	9	5
2-046	Diabetes Mellitus	101	34	67	86	38	48	109	55	54	102	46	56
2-047	Malnutrition	2	1	1	3	2	1	2	1	1	12	6	6

REGISTERED DEATHS BY CAUSE AND SEX OF DECEASED, ALL BAHAMAS: 2010 – 2013

TABLE 10 CONT'D

GENERAL MORTALITY SELECTED LIST 2	LIST OF CAUSES FOR TABULATION OF MORTALITY, TENTH REVISION OF THE INTERNATIONAL CLASSIFICATION OF DISEASES	2010			2011			2012			2013		
		BOTH SEXES	MALE	FEMALE	BOTH SEXES	MALE	FEMALE	BOTH SEXES	MALE	FEMALE	BOTH SEXES	MALE	FEMALE
2-048	Mental and Behavioural Disorders due to Psychoactive Substance Use	8	8	-	11	10	1	11	9	2	7	6	1
2-049	Meningitis	2	1	1	3	-	3	-	-	-	3	3	-
2-050	Alzheimer's Disease	8	3	5	25	9	16	18	4	14	22	10	12
2-051	Acute Rheumatic Fever and Chronic Rheumatic Heart Diseases	3	2	1	4	2	2	2	-	2	1	-	1
2-052	Hypertensive Diseases	192	86	106	214	98	116	149	65	84	149	79	70
2-053	Ischaemic Heart Diseases	174	110	64	180	103	77	174	106	68	198	121	77
2-054	Other Heart Diseases	124	73	51	141	74	67	94	48	46	95	59	36
2-055	Cerebrovascular Diseases	147	62	85	130	60	70	150	76	74	146	73	73
2-056	Atherosclerosis	1	1	-	2	-	2	-	-	-	1	-	1
2-057	Remainder of Diseases of the Circulatory System	42	26	16	35	16	19	35	16	19	30	14	16
2-059	Pneumonia	67	32	35	54	29	25	71	26	45	48	22	26
2-060	Other Acute Lower Respiratory Infections	1	-	1	-	-	-	-	-	-	-	-	-
2-061	Chronic Lower Respiratory Diseases	21	16	5	20	14	6	21	15	6	12	10	2
2-062	Remainder of Diseases of the Respiratory System	22	14	8	34	19	15	27	16	11	34	15	19
2-063	Gastric and Duodenal Ulcer	9	8	1	10	9	1	7	5	2	8	6	2
2-064	Diseases of the Liver	35	24	11	31	22	9	33	20	13	45	26	19
2-065	Glomerular and Renal Tubulo-Interstitial Diseases	12	4	8	9	3	6	14	9	5	8	4	4
2-066	Pregnancy with Abortive Outcome	-	-	-	-	-	-	1	-	1	-	-	-
2-067	Other Direct Obstetric Deaths	5	-	5	-	-	-	1	-	1	2	-	2
2-068	Indirect Obstetric Deaths	-	-	-	-	-	-	-	-	-	2	-	2
2-069	Certain Conditions Originating in the Perinatal Period	32	17	15	29	16	13	28	14	14	22	11	11
2-070	Congenital Malformations Deformations and Chromosomal Abnormalities	13	8	5	15	10	5	11	7	4	15	6	9
2-071	Symptoms Signs and Abnormal Clinical and Laboratory Findings Not Elsewhere Classified	39	20	19	30	13	17	28	17	11	26	13	13
2-072	All Other Diseases	197	93	14	201	99	102	218	104	114	222	111	111
2-073	Transportation Accidents	55	44	11	47	4	4	48	35	13	54	39	15
2-074	Falls	7	4	3	2	1	1	7	6	1	5	4	1
2-075	Accidental Drowning and Submersion Exposure to Smoke Fire and Flames	20	15	5	24	19	5	19	16	3	25	20	5
2-076	Accidental Poisoning by Exposure to Noxious Substances	6	5	1	15	6	9	1	1	-	4	4	-
2-077	Intentional Self-Harm	5	5	-	2	1	1	1	-	1	1	1	-
2-078	Assault	10	6	4	4	3	1	6	5	1	5	4	1
2-079	All Other External Causes	100	85	15	129	115	14	126	112	14	125	113	12
2-080		30	20	10	37	29	8	32	21	11	37	22	15
	TOTAL	2023	1108	915	2117	1181	936	1993	1091	902	2065	1139	926

**SECTION I
LIVE BIRTH**

REGISTERED LIVE-BIRTHS BY USUAL RESIDENCE AND AGE- GROUP OF MOTHER,
ALL BAHAMAS: 2013

TABLE 11

USUAL RESIDENCE OF MOTHER	AGE-GROUP OF MOTHER										
	TOTAL	10- 14	15- 19	20- 24	25- 29	30- 34	35- 39	40- 44	45- 49	50& OVER	NOT STATED
NEW PROVIDENCE	3,230	4	330	772	801	693	485	138	7	-	-
GRAND BAHAMA	638	-	77	171	161	130	73	24	2	-	-
ABACO	200	1	17	40	52	49	36	5	-	-	-
ACKLINS	7	-	-	2	2	2	1	-	-	-	-
ANDROS	55	-	5	12	19	9	9	1	-	-	-
BERRY ISLANDS	7	-	2	2	1	1	-	1	-	-	-
BIMINIS	8	-	1	4	2	-	1	-	-	-	-
CAT ISLAND	6	-	-	2	1	2	1	-	-	-	-
CROOKED ISLAND	2	-	-	-	1	1	-	-	-	-	-
ELEUTHERA	85	-	9	22	18	19	10	7	-	-	-
EXUMA AND CAYS	50	-	5	11	12	12	7	3	-	-	-
HARBOUR ISLAND	9	-	-	2	2	4	1	-	-	-	-
INAGUA	6	-	-	1	2	2	1	-	-	-	-
LONG ISLAND	11	-	1	3	2	4	-	1	-	-	-
MAYAGUANA	1	-	-	1	-	-	-	-	-	-	-
RAGGED ISLAND	1	-	-	-	-	-	-	1	-	-	-
SAN SALVADOR AND RUM CAY	10	-	2	3	2	2	1	-	-	-	-
SPANISH WELLS	2	-	-	-	2	-	-	-	-	-	-
ABROAD	2	-	1	-	-	-	-	1	-	-	-
NOT STATED	-	-	-	-	-	-	-	-	-	-	-
TOTAL	4,330	5	450	1,048	1,080	930	626	182	9	-	-

REGISTERED LIVE-BIRTHS BY MONTH, SEX AND USUAL RESIDENCE OF MOTHER, ALL BAHAMAS: 2013

TABLE 12

USUAL RESIDENCE OF MOTHER	MONTH OF BIRTH AND SEX OF CHILD																											
	TOTAL		JAN		FEB		MAR		APR		MAY		JUN		JUL		AUG		SEP		OCT		NOV		DEC		NOT STATED	
	M	F	M	F	M	F	M	F	M	F	M	F	M	F	M	F	M	F	M	F	M	F	M	F	M	F	M	F
NEW PROVIDENCE	1,620	1,610	160	161	118	119	121	99	98	117	93	134	100	104	136	126	156	166	167	133	159	151	151	156	161	144	-	-
GRAND BAHAMA	328	310	27	32	32	25	22	21	23	26	33	22	22	21	27	23	31	28	19	34	32	27	27	26	33	25	-	-
ABACO	92	108	11	11	8	7	5	16	9	3	2	5	7	4	4	13	16	10	12	15	8	12	5	6	5	6	-	-
ACKLINS	4	3	1	-	-	-	-	-	-	-	-	-	1	-	1	-	-	-	-	-	2	-	1	1	-	-	-	-
ANDROS	21	34	2	1	1	4	2	2	-	1	2	2	1	-	2	3	1	7	1	2	4	4	4	5	1	3	-	-
BERRY ISLANDS	3	4	1	1	-	-	-	-	-	-	1	-	-	1	-	-	1	1	-	1	-	-	-	-	-	-	-	-
BIMINIS	3	5	-	1	-	1	-	-	1	-	-	1	-	-	1	1	-	-	-	1	1	-	-	-	-	-	-	-
CAT ISLAND	-	6	-	-	-	-	-	1	-	-	-	-	-	-	1	-	1	-	-	-	1	-	1	-	1	-	-	-
CROOKED ISLAND	1	1	-	-	-	-	-	-	-	-	-	-	-	-	-	-	-	-	1	-	-	-	-	1	-	-	-	-
ELEUTHERA	34	51	5	3	2	2	3	4	3	6	3	6	4	2	3	4	3	-	3	3	2	3	1	5	2	13	-	-
EXUMA AND CAYS	21	29	1	3	1	1	2	1	1	3	2	5	3	-	4	2	2	3	1	6	2	2	2	3	-	-	-	-
HARBOUR ISLAND	5	4	-	-	-	-	-	1	-	-	-	1	-	-	2	1	2	1	1	-	-	-	-	-	-	-	-	-
INAGUA	4	2	-	-	-	1	-	-	-	-	-	-	-	-	1	1	-	-	-	-	1	-	2	-	-	-	-	-
LONG ISLAND	10	1	1	1	3	-	-	-	-	-	-	-	-	-	-	-	-	1	-	-	2	-	2	-	2	-	-	-
MAYAGUANA	-	1	-	-	-	-	-	-	-	-	-	-	-	-	-	-	-	-	-	-	-	-	-	-	-	-	-	-
RAGGED ISLAND	-	1	-	-	-	-	-	-	-	-	-	-	-	-	-	-	-	-	-	-	-	-	1	-	-	-	-	-
SAN SALVADOR AND RUM CAY	6	4	-	-	-	1	-	-	-	2	-	-	1	-	2	-	-	-	1	1	1	-	-	-	1	-	-	-
SPANISH WELL	1	1	-	-	-	-	-	-	-	1	-	-	-	-	-	-	1	-	-	-	-	-	-	-	-	-	-	-
ABROAD	1	1	-	-	-	-	-	-	1	-	-	-	-	-	-	-	-	-	-	-	-	1	-	-	-	-	-	-
NOT STATED	-	-	-	-	-	-	-	-	-	-	-	-	-	-	-	-	-	-	-	-	-	-	-	-	-	-	-	-
TOTAL	2,154	2,176	209	214	165	161	155	145	136	159	136	176	139	132	183	175	213	218	206	196	212	204	194	204	206	192	-	-

**REGISTERED LIVE BIRTHS BY SELECTED ISLANDS,
AGE-GROUP AND MARITAL STATUS OF MOTHER, ALL BAHAMAS: 2013**

TABLE 13

USUAL RESIDENCE AND MARITAL STATUS OF MOTHER	TOTAL	AGE GROUP OF MOTHER									NOT STATED
		10 - 14	15 - 19	20 - 24	25 - 29	30 - 34	35 - 39	40 - 44	45 - 49	50 +	
ALL BAHAMAS	4330	5	450	1048	1080	930	626	182	9	-	-
SINGLE	2692	5	441	883	627	411	255	67	3	-	-
MARRIED	1585	-	9	164	448	503	349	108	4	-	-
WIDOWED	15	-	-	-	2	4	5	3	1	-	-
DIVORCED	33	-	-	-	2	10	17	3	1	-	-
NOT STATED	5	-	-	1	1	2	-	1	-	-	-
NEW PROVIDENCE	3230	4	330	772	801	693	485	138	7	-	-
SINGLE	2024	4	326	658	481	310	193	51	1	-	-
MARRIED	1167	-	4	113	317	372	274	83	4	-	-
WIDOWED	10	-	-	-	1	3	3	2	1	-	-
DIVORCED	26	-	-	-	2	7	15	1	1	-	-
NOT STATED	3	-	-	1	-	1	-	1	-	-	-
GRAND BAHAMA	638	-	77	171	161	130	73	24	2	-	-
SINGLE	413	-	76	149	84	56	36	10	2	-	-
MARRIED	221	-	1	22	77	71	36	14	-	-	-
WIDOWED	-	-	-	-	-	-	-	-	-	-	-
DIVORCED	3	-	-	-	-	2	1	-	-	-	-
NOT STATED	1	-	-	-	-	1	-	-	-	-	-
OTHER ISLANDS	460	1	42	105	118	107	68	19	-	-	-
SINGLE	253	1	38	76	62	45	26	5	-	-	-
MARRIED	197	-	4	29	54	60	39	11	-	-	-
WIDOWED	5	-	-	-	1	1	2	1	-	-	-
DIVORCED	4	-	-	-	-	1	1	2	-	-	-
NOT STATED	1	-	-	-	1	-	-	-	-	-	-
NOT STATED	2	-	1	-	-	-	-	1	-	-	-
SINGLE	2	-	1	-	-	-	-	1	-	-	-
MARRIED	-	-	-	-	-	-	-	-	-	-	-
WIDOWED	-	-	-	-	-	-	-	-	-	-	-
DIVORCED	-	-	-	-	-	-	-	-	-	-	-
NOT STATED	-	-	-	-	-	-	-	-	-	-	-

**REGISTERED LIVE-BIRTHS BY BIRTH ORDER
AND AGE-GROUP OF MOTHER, ALL BAHAMAS: 2013**

TABLE 14

AGE-GROUP OF MOTHER	TOTAL	BIRTH ORDER											
		1	2	3	4	5	6	7	8	9	10+	UNKNOWN	
10 - 14	5	5	-	-	-	-	-	-	-	-	-	-	-
15 - 19	450	409	39	2	-	-	-	-	-	-	-	-	-
20 - 24	1,048	644	311	70	17	2	-	-	-	-	1	3	
25 - 29	1,080	330	418	217	79	27	5	2	-	-	-	2	
30 - 34	930	186	310	231	110	53	26	10	4	-	-	-	
35 - 39	626	65	186	152	108	55	26	17	7	2	6	2	
40 - 44	182	20	40	44	36	22	11	4	3	1	1	-	
45 - 49	9	3	2	-	4	-	-	-	-	-	-	-	
50 +	-	-	-	-	-	-	-	-	-	-	-	-	
NOT STATED	-	-	-	-	-	-	-	-	-	-	-	-	
TOTAL	4,330	1,662	1,306	716	354	159	68	33	14	3	8	7	

**SECTION II
INFANT DEATHS**

REGISTERED STILLBIRTHS AND INFANT DEATHS BY DURATION OF LIFE, ISLAND AND MONTH OF OCCURRENCE, ALL BAHAMAS: 2013

TABLE 15

DURATION OF LIFE AND ISLAND OF OCCURRENCE	TOTAL	MONTH OF OCCURRENCE												NOT STATED	
		JAN	FEB	MAR	APR	MAY	JUN	JUL	AUG	SEP	OCT	NOV	DEC		
ALL BAHAMAS															
TOTAL INFANT DEATHS AND STILLBIRTHS	65	7	4	7	5	5	5	7	5	7	6	4	3	-	
TOTAL STILLBIRTHS (0 DAYS)	14	3	-	4	-	-	1	2	1	1	1	-	1	-	
TOTAL INFANT DEATHS	51	4	4	3	5	5	4	5	4	6	5	4	2	-	
UNDER 28 DAYS	27	4	3	1	3	3	2	1	2	4	2	1	1	-	
28 DAYS OR MORE BUT LESS THAN 3 MONTHS	13	-	1	2	1	-	2	2	1	1	1	2	-	-	
3 MONTHS OR MORE BUT LESS THAN 6 MONTHS	6	-	-	-	-	1	-	1	-	1	1	1	1	-	
6 MONTHS OR MORE BUT LESS THAN 9 MONTHS	3	-	-	-	1	-	-	-	1	-	1	-	-	-	
9 MONTHS OR MORE BUT LESS THAN 12 MONTHS	2	-	-	-	-	1	-	1	-	-	-	-	-	-	
NEW PROVIDENCE															
TOTAL INFANT DEATHS AND STILLBIRTHS	57	6	3	5	5	5	4	6	4	7	5	4	3	-	
TOTAL STILLBIRTHS (0 DAYS)	8	2	-	2	-	-	-	1	-	1	1	-	1	-	
TOTAL INFANT DEATHS	49	4	3	3	5	5	4	5	4	6	4	4	2	-	
UNDER 28 DAYS	26	4	2	1	3	3	2	1	2	4	2	1	1	-	
28 DAYS OR MORE BUT LESS THAN 3 MONTHS	13	-	1	2	1	-	2	2	1	1	1	2	-	-	
3 MONTHS OR MORE BUT LESS THAN 6 MONTHS	5	-	-	-	-	1	-	1	-	1	-	1	1	-	
6 MONTHS OR MORE BUT LESS THAN 9 MONTHS	3	-	-	-	1	-	-	-	1	-	1	-	-	-	
9 MONTHS OR MORE BUT LESS THAN 12 MONTHS	2	-	-	-	-	1	-	1	-	-	-	-	-	-	
GRAND BAHAMA															
TOTAL INFANT DEATHS AND STILLBIRTHS	7	1	1	2	-	-	1	1	1	-	-	-	-	-	
TOTAL STILLBIRTHS (0 DAYS)	6	1	-	2	-	-	1	1	1	-	-	-	-	-	
TOTAL INFANT DEATHS	1	-	1	-	-	-	-	-	-	-	-	-	-	-	
UNDER 28 DAYS	1	-	1	-	-	-	-	-	-	-	-	-	-	-	
28 DAYS OR MORE BUT LESS THAN 3 MONTHS	-	-	-	-	-	-	-	-	-	-	-	-	-	-	
3 MONTHS OR MORE BUT LESS THAN 6 MONTHS	-	-	-	-	-	-	-	-	-	-	-	-	-	-	
6 MONTHS OR MORE BUT LESS THAN 9 MONTHS	-	-	-	-	-	-	-	-	-	-	-	-	-	-	
9 MONTHS OR MORE BUT LESS THAN 12 MONTHS	-	-	-	-	-	-	-	-	-	-	-	-	-	-	
OTHER ISLANDS															
TOTAL INFANT DEATHS AND STILLBIRTHS	1	-	-	-	-	-	-	-	-	-	1	-	-	-	
TOTAL STILLBIRTHS (0 DAYS)	-	-	-	-	-	-	-	-	-	-	-	-	-	-	
TOTAL INFANT DEATHS	1	-	-	-	-	-	-	-	-	-	1	-	-	-	
UNDER 28 DAYS	-	-	-	-	-	-	-	-	-	-	-	-	-	-	
28 DAYS OR MORE BUT LESS THAN 3 MONTHS	-	-	-	-	-	-	-	-	-	-	-	-	-	-	
3 MONTHS OR MORE BUT LESS THAN 6 MONTHS	1	-	-	-	-	-	-	-	-	-	1	-	-	-	
6 MONTHS OR MORE BUT LESS THAN 9 MONTHS	-	-	-	-	-	-	-	-	-	-	-	-	-	-	
9 MONTHS OR MORE BUT LESS THAN 12 MONTHS	-	-	-	-	-	-	-	-	-	-	-	-	-	-	

REGISTERED INFANT DEATHS BY CAUSE, SEX AND DURATION OF LIFE, ALL BAHAMAS: 2013

TABLE 16

GENERAL MORTALITY LIST 3	LIST OF CAUSES FOR TABULATION OF MORTALITY, TENTH REVISION OF THE INTERNATIONAL CLASSIFICATION OF DISEASES	SEX AND DURATION OF LIFE															
		TOTAL		6 DAYS OR LESS		7 - 27 DAYS		28 DAYS OR MORE BUT LESS THAN 3 MONTHS		3 MONTHS OR MORE BUT LESS THAN 6 MONTHS		6 MONTHS OR MORE BUT LESS THAN 9 MONTHS		9 MONTHS OR MORE BUT LESS THAN 12 MONTHS		NOT STATED	
		M	F	M	F	M	F	M	F	M	F	M	F	M	F	M	F
3-001	CERTAIN INFECTIOUS AND PARASITIC DISEASES	5	4	-	1	-	-	3	3	2	-	-	-	-	-	-	
3-002	Diarrhoea and Gastroenteritis of Presumed Infectious Origin	1	1	-	-	-	-	1	1	-	-	-	-	-	-	-	
3-009	Septicaemia	4	1	-	-	-	-	2	1	2	-	-	-	-	-	-	
3-012	Human Immunodeficiency Virus(HIV) Disease	-	1	-	1	-	-	-	-	-	-	-	-	-	-	-	
3-015	Remainder of Certain Infectious and Parasitic Diseases	-	1	-	-	-	-	-	1	-	-	-	-	-	-	-	
3-023	ENDOCRINE NUTRITIONAL AND METABOLIC DISEASES	2	-	-	-	-	-	-	-	1	-	1	-	-	-	-	
3-025	Remainder of Endocrine Nutritional and Metabolic Diseases	2	-	-	-	-	-	-	-	1	-	1	-	-	-	-	
3-031	DISEASES OF THE CIRCULATORY SYSTEM	4	1	-	-	-	-	2	-	1	1	-	-	1	-	-	
3-032	Pneumonia	2	-	-	-	-	-	2	-	-	-	-	-	-	-	-	
3-033	Other Acute Respiratory Infections	-	1	-	-	-	-	-	-	-	1	-	-	-	-	-	
3-034	Remainder of Diseases of the Respiratory System	2	-	-	-	-	-	-	-	1	-	-	-	1	-	-	
3-035	DISEASES OF THE DIGESTIVE SYSTEM	1	1	-	1	-	-	-	-	-	-	1	-	-	-	-	
3-036	DISEASE OF THE GENITOURINARY SYSTEM	-	1	-	1	-	-	-	-	-	-	-	-	-	-	-	
3-037	CERTAIN CONDITIONS ORIGINATING IN THE PERINATAL PERIOD	11	11	7	6	3	4	1	1	-	-	-	-	-	-	-	
3-038	Fetus and Newborn Affected by Maternal Factors and by Complications of Pregnancy Labour and Delivery	2	-	1	-	1	-	-	-	-	-	-	-	-	-	-	
3-039	Disorders Relating to Length of Gestation and Fetal Growth	1	1	1	-	-	-	-	1	-	-	-	-	-	-	-	
3-041	Intrauterine Hypoxia and Birth Asphyxia	1	2	1	2	-	-	-	-	-	-	-	-	-	-	-	
3-042	Respiratory Distress of Newborn	1	-	1	-	-	-	-	-	-	-	-	-	-	-	-	
3-043	Congenital Pneumonia	1	2	1	1	-	1	-	-	-	-	-	-	-	-	-	
3-044	Other Respiratory Conditions of Newborn	2	2	1	1	1	1	-	-	-	-	-	-	-	-	-	
3-045	Bacterial Sepsis of Newborn	1	2	-	1	1	1	-	-	-	-	-	-	-	-	-	
3-047	Haemorrhagic and Haematological Disorders of Fetus and Newborn	1	1	1	1	-	-	-	-	-	-	-	-	-	-	-	
3-048	Remainder of Perinatal Conditions	1	1	-	-	-	1	1	-	-	-	-	-	-	-	-	
3-049	CONGENITAL MALFORMATIONS, DEFORMATIONS AND CHROMOSOMAL ABNORMALITIES	3	5	1	-	-	3	1	2	-	-	-	-	1	-	-	
3-050	Congenital Hydrocephalus and Spina Bifida	-	1	-	-	-	-	-	1	-	-	-	-	-	-	-	
3-051	Other Congenital Malformations of the Nervous System	3	2	1	-	-	2	1	-	-	-	-	-	1	-	-	
3-052	Congenital Malformations of the Heart	-	1	-	-	-	-	-	1	-	-	-	-	-	-	-	
3-054	Down's Syndrome and Other Chromosomal Abnormalities	-	1	-	-	-	1	-	-	-	-	-	-	-	-	-	
3-055	Other Congenital Malformations	-	2	-	-	-	-	-	-	-	1	-	1	-	-	-	
3-056	SYMPTOMS SIGNS AND ABNORMAL CLINICAL AND LABORATORY FINDINGS NOT ELSEWHERE CLASSIFIED	-	-	-	-	-	-	-	-	-	-	-	-	-	-	-	
3-057	Sudden Infant Death Syndrome	-	2	-	-	-	-	-	-	-	1	-	1	-	-	-	
	TOTAL	26	25	8	9	3	7	7	6	4	2	2	1	2	-	-	

**SECTION III
DEATHS**

REGISTERED DEATHS BY USUAL RESIDENCE, SEX AND
AGE-GROUP OF DECEASED, ALL BAHAMAS: 2013

TABLE 17

USUAL RESIDENCE OF DECEASED	SEX	AGE-GROUP													
		TOTAL	UND 1	1	2	3	4	5- 9	10- 14	15- 19	20- 24	25- 29	30- 34	35- 39	40- 44
NEW PROVIDENCE	M	794	22	4	4	3	1	3	4	19	35	30	31	35	46
	F	655	21	2	1	-	-	2	3	6	10	6	27	24	24
GRAND BAHAMA	M	156	2	-	2	1	-	2	1	3	2	5	4	5	4
	F	123	3	-	-	-	-	1	-	1	1	2	2	4	-
ABACO	M	35	1	-	-	-	-	-	-	1	1	-	1	3	1
	F	20	-	-	-	-	-	-	-	-	-	-	-	1	1
ACKLINS	M	-	-	-	-	-	-	-	-	-	-	-	-	-	-
	F	1	-	-	-	-	-	-	-	-	-	-	-	-	-
ANDROS	M	22	1	-	-	-	-	-	-	-	-	-	-	1	-
	F	20	-	-	-	-	-	-	-	-	-	1	-	1	-
BERRY ISLANDS	M	4	-	-	-	-	-	-	-	-	-	-	-	-	-
	F	2	-	-	-	-	-	-	-	-	-	-	-	-	-
BIMINIS	M	5	-	-	-	-	-	-	-	-	-	-	-	-	-
	F	6	-	-	-	-	-	-	-	-	-	-	-	-	-
CAT ISLAND	M	4	-	-	-	-	-	-	-	-	-	1	-	-	-
	F	3	-	-	-	-	-	-	-	-	-	-	-	-	-
CROOKED ISLAND	M	2	-	-	-	-	-	-	-	-	-	-	-	-	1
	F	2	-	-	-	-	-	-	-	-	-	-	1	-	-
ELEUTHERA	M	25	-	-	-	-	-	-	1	2	-	1	2	1	4
	F	26	-	-	-	-	-	1	-	1	1	-	1	-	1
EXUMA AND CAYS	M	12	-	-	-	-	-	-	-	-	-	-	-	1	-
	F	16	-	-	-	-	-	-	-	-	-	-	-	1	-
HARBOUR ISLAND	M	5	-	-	-	-	-	-	-	-	-	-	-	-	-
	F	6	-	-	-	-	-	-	-	-	-	-	-	-	-
INAGUA	M	3	-	-	-	-	-	-	-	-	-	-	-	-	-
	F	4	1	-	-	-	-	-	-	-	-	-	2	-	-
LONG ISLAND	M	17	-	-	-	-	-	-	1	-	-	-	-	-	1
	F	11	-	-	-	-	-	-	-	-	-	-	1	1	-
MAYAGUANA	M	4	-	-	-	-	-	-	-	-	-	-	-	-	1
	F	3	-	-	-	-	-	-	-	-	-	-	-	-	1
RAGGED ISLAND	M	2	-	-	-	-	-	-	-	-	-	-	-	-	-
	F	-	-	-	-	-	-	-	-	-	-	-	-	-	-
SAN SALVADOR	M	2	-	-	-	-	-	-	-	-	-	-	-	-	-
	F	2	2	-	-	-	-	-	-	-	-	-	-	-	-
SPANISH WELLS	M	2	-	-	-	-	-	-	-	-	-	-	-	-	-
	F	3	-	-	-	-	-	-	-	-	-	-	-	-	-
ABROAD	M	45	-	-	-	-	-	-	-	1	1	2	2	1	3
	F	23	-	-	-	-	-	1	-	-	1	-	-	-	2
NOT STATED	M	-	-	-	-	-	-	-	-	-	-	-	-	-	-
	F	-	-	-	-	-	-	-	-	-	-	-	-	-	-
TOTAL	M	1,139	26	4	6	4	1	5	7	26	39	39	40	48	61
	F	926	25	2	1	-	-	5	3	8	13	9	34	31	30

REGISTERED DEATHS BY USUAL RESIDENCE, SEX AND
AGE-GROUP OF DECEASED, ALL BAHAMAS: 2013

TABLE 17 (cont'd)

USUAL RESIDENCE OF DECEASED	SEX	AGE-GROUP												
		45- 49	50- 54	55- 59	60- 64	65- 69	70- 74	75- 79	80- 84	85- 89	90- 94	95- 99	100 +	NOT STATED
NEW PROVIDENCE	M	61	71	60	55	65	69	80	51	27	11	5	2	-
	F	33	57	49	37	50	54	69	63	58	32	20	7	-
GRAND BAHAMA	M	17	11	17	12	13	16	14	11	12	1	1	-	-
	F	9	5	11	16	10	11	16	11	10	4	5	1	-
ABACO	M	4	1	4	2	5	3	3	4	1	-	-	-	-
	F	-	1	2	4	2	2	1	4	2	-	-	-	-
ACKLINS	M	-	-	-	-	-	-	-	-	-	-	-	-	-
	F	-	-	-	-	-	-	-	-	-	-	1	-	-
ANDROS	M	2	2	1	3	1	3	2	1	2	-	1	2	-
	F	-	1	2	1	4	2	3	2	2	1	-	-	-
BERRY ISLANDS	M	2	-	-	-	-	-	1	-	-	-	-	-	-
	F	-	-	-	-	-	2	-	-	-	-	-	-	-
BIMINIS	M	1	-	-	2	-	1	-	-	-	-	1	-	-
	F	-	-	2	-	-	1	2	-	-	1	-	-	-
CAT ISLAND	M	-	-	-	-	-	-	-	-	1	-	2	-	-
	F	-	1	-	-	-	-	-	-	1	1	-	-	-
CROOKED ISLAND	M	-	-	-	-	-	-	1	-	-	-	-	-	-
	F	-	-	-	-	-	-	-	-	1	-	-	-	-
ELEUTHERA	M	2	1	1	-	2	3	2	-	-	2	1	-	-
	F	-	1	4	2	1	3	1	2	3	2	1	1	-
EXUMA AND CAYS	M	2	2	3	1	-	1	1	1	-	-	-	-	-
	F	2	1	1	-	1	2	2	2	2	-	2	-	-
HARBOUR ISLAND	M	1	-	-	-	1	-	2	-	-	1	-	-	-
	F	1	-	1	-	-	-	1	2	-	-	-	1	-
INAGUA	M	-	-	-	-	-	2	-	-	-	1	-	-	-
	F	-	-	-	-	-	-	1	-	-	-	-	-	-
LONG ISLAND	M	2	1	-	2	2	1	2	2	2	1	-	-	-
	F	1	2	1	-	-	-	-	2	2	-	1	-	-
MAYAGUANA	M	1	-	-	-	-	-	-	1	1	-	-	-	-
	F	-	-	-	-	-	1	-	1	-	-	-	-	-
RAGGED ISLAND	M	-	-	1	-	-	-	-	-	1	-	-	-	-
	F	-	-	-	-	-	-	-	-	-	-	-	-	-
SAN SALVADOR	M	-	1	-	-	-	-	-	1	-	-	-	-	-
	F	-	1	-	-	-	1	-	-	-	-	-	-	-
SPANISH WELLS	M	-	-	-	-	-	1	-	1	-	-	-	-	-
	F	-	-	-	-	-	-	1	1	1	-	-	-	-
ABROAD	M	2	5	9	4	7	3	2	1	1	1	-	-	-
	F	1	2	3	3	-	3	4	1	1	1	-	-	-
NOT STATED	M	-	-	-	-	-	-	-	-	-	-	-	-	-
	F	-	-	-	-	-	-	-	-	-	-	-	-	-
TOTAL	M	97	95	96	81	96	103	110	74	48	18	11	4	-
	F	47	72	76	63	68	82	101	91	83	42	30	10	-

REGISTERED DEATHS BY CAUSE AND AGE-GROUP OF DECEASED MALES, ALL BAHAMAS: 2013

TABLE 18

GENERAL MORTALITY LIST 1	LIST OF CAUSES FOR TABULATION OF MORTALITY, TENTH REVISION OF THE INTERNATIONAL CLASSIFICATION OF DISEASES	AGE-GROUP OF DECEASED																				NOT STATED			
		ALL AGES	UND	1	2	3	4	5-9	10-14	15-19	20-24	25-29	30-34	35-39	40-44	45-49	50-54	55-59	60-64	65-69	70-74		75-79	80-84	85+
			1	1	2	3	4	9	14	19	24	29	34	39	44	49	54	59	64	69	74		79	84	+
1-001	CERTAIN INFECTIOUS AND PARASITIC DISEASES	95	5	-	2	-	-	2	-	1	4	-	2	6	9	14	19	12	6	4	3	2	2	2	-
1-003	Diarrhoea and Gastroenteritis of Presumed Infectious Origin	2	1	-	-	-	-	-	-	-	-	-	-	-	-	1	-	-	-	-	-	-	-	-	-
1-005	Respiratory Tuberculosis	1	-	-	-	-	-	-	-	-	-	-	-	-	-	-	-	-	-	-	-	-	1	-	-
1-012	Septicaemia	27	4	-	1	-	-	1	-	-	2	-	-	-	2	5	2	3	1	2	2	1	1	-	-
1-020	Human Immunodeficiency Virus [HIV] Disease	61	-	-	-	-	-	1	-	1	2	-	2	6	9	10	13	10	3	3	1	-	-	-	-
1-025	Remainder of Certain Infectious and Parasitic Diseases	4	-	-	1	-	-	-	-	-	-	-	-	-	-	2	-	-	-	-	-	-	-	1	-
1-026	NEOPLASMS	195	-	-	-	-	-	-	1	1	2	1	-	3	3	10	15	27	20	23	30	25	19	15	-
1-027	Malignant Neoplasm of Lip Oral Cavity and Pharynx	5	-	-	-	-	-	-	-	-	-	-	-	-	-	2	1	1	1	-	-	-	-	-	-
1-028	Malignant Neoplasm of Oesophagus	5	-	-	-	-	-	-	-	-	-	-	-	-	1	-	1	-	1	1	-	-	1	-	-
1-029	Malignant Neoplasm of Stomach	12	-	-	-	-	-	-	-	-	-	-	-	-	-	2	2	3	2	1	-	1	1	-	-
1-030	Malignant Neoplasm of Colon, Rectum and Anus	30	-	-	-	-	-	-	-	-	-	-	-	2	2	4	3	4	3	7	2	2	1	-	-
1-031	Malignant Neoplasm of Liver and Intrahepatic Bile Ducts	6	-	-	-	-	-	-	-	-	-	-	-	-	-	1	-	-	-	2	2	1	-	-	-
1-032	Malignant Neoplasm of Pancreas	8	-	-	-	-	-	-	-	-	-	-	-	-	1	-	1	1	2	1	1	-	1	-	-
1-033	Malignant Neoplasms of Larynx	3	-	-	-	-	-	-	-	-	-	-	-	-	-	-	1	-	2	-	-	-	-	-	-
1-034	Malignant Neoplasm of Trachea Bronchus and Lung	14	-	-	-	-	-	-	-	-	-	-	-	-	-	2	2	1	3	2	2	1	1	-	-
1-036	Malignant Neoplasm of Breast	2	-	-	-	-	-	-	-	-	-	-	-	-	1	1	-	-	-	-	-	-	-	-	-
1-040	Malignant Neoplasms of Prostate	42	-	-	-	-	-	-	-	-	-	-	-	-	-	-	2	-	5	11	10	8	6	-	-
1-041	Malignant Neoplasm of Bladder	4	-	-	-	-	-	-	-	-	-	-	-	-	-	1	1	-	-	-	-	1	1	-	-
1-042	Malignant Neoplasm of Meninges Brain and Other Parts of the Central Nervous System	2	-	-	-	-	-	-	-	-	-	-	-	-	1	-	-	1	-	-	-	-	-	-	-
1-043	Non-Hodgkin's Lymphoma	5	-	-	-	-	-	-	-	-	-	-	-	-	1	-	2	1	-	-	-	-	1	-	-
1-044	Multiple Myeloma and Malignant Plasma Cell Neoplasms	6	-	-	-	-	-	-	-	-	-	-	1	-	-	-	1	1	1	-	1	1	-	-	-
1-045	Leukaemias	6	-	-	-	-	-	1	-	2	-	-	1	-	-	-	1	-	-	-	-	-	1	-	-
1-046	Remainder of Malignant Neoplasms	37	-	-	-	-	-	-	1	-	-	-	1	1	3	1	7	6	3	3	7	2	2	-	-
1-047	Remainder of Neoplasms	8	-	-	-	-	-	-	-	-	1	-	-	-	-	1	2	1	-	2	-	-	1	-	-
1-048	DISEASES OF THE BLOOD AND BLOOD-FORMING ORGANS AND CERTAIN DISORDERS INVOLVING THE IMMUNE MECHANISM	9	-	-	-	1	-	-	1	1	-	-	1	1	-	-	2	-	-	-	1	1	-	-	-
1-049	Anaemias	9	-	-	-	1	-	-	1	1	-	-	1	1	-	-	2	-	-	-	1	1	-	-	-
1-051	ENDOCRINE NUTRITIONAL AND METABOLIC DISEASES	74	2	-	-	-	-	-	-	1	-	1	1	-	2	4	8	4	6	10	8	9	7	11	-
1-052	Diabetes Mellitus	46	-	-	-	-	-	-	1	-	1	1	-	2	3	7	4	5	5	4	4	3	6	-	-
1-053	Malnutrition	6	-	-	-	-	-	-	-	-	-	-	-	-	1	-	-	-	2	1	1	1	-	-	-
1-054	Remainder of Endocrine Nutritional and Metabolic Diseases	22	2	-	-	-	-	-	-	-	-	-	-	-	-	1	-	1	3	3	4	3	5	-	-
1-055	MENTAL AND BEHAVIOURAL DISORDERS	6	-	-	-	-	-	-	-	-	-	-	-	3	-	2	-	1	-	-	-	-	-	-	-
1-056	Mental and Behavioural Disorders Due to Psychoactive Substance Use	6	-	-	-	-	-	-	-	-	-	-	-	3	-	2	-	1	-	-	-	-	-	-	-
1-058	DISEASES OF THE NERVOUS SYSTEM	34	-	1	-	-	-	1	-	1	1	1	1	2	-	1	3	1	1	2	3	5	5	5	-
1-059	Meningitis	3	-	-	-	-	-	-	-	-	-	-	-	-	-	1	-	-	-	1	1	-	-	-	-

REGISTERED DEATH BY CAUSE AND AGE-GROUP OF DECEASED MALES, ALL BAHAMAS: 2013

TABLE 18 (Cont'd)

GENERAL MORTALITY LIST 1	LIST OF CAUSES FOR TABULATION OF MORTALITY, TENTH REVISION OF THE INTERNATIONAL CLASSIFICATION OF DISEASES	AGE-GROUP OF DECEASED																							
		ALL AGES	UND 1	1	2	3	4	5-9	10-14	15-19	20-24	25-29	30-34	35-39	40-44	45-49	50-54	55-59	60-64	65-69	70-74	75-79	80-84	85+	NOT STATED
		1-060	Alzheimer's Disease	10	-	-	-	-	-	-	-	-	-	-	-	-	-	-	-	-	-	-	1	3	3
1-061	Remainder of Diseases of the Nervous system	21	-	1	-	-	-	1	-	1	1	1	2	-	-	3	1	1	1	1	1	2	2	2	-
1-062	DISEASE OF THE EYE AND ADNEXA	1	-	-	-	-	-	-	-	-	-	-	-	-	-	-	-	-	-	-	-	1	-	-	-
1-064	DISEASES OF THE CIRCULATORY SYSTEM	346	-	-	-	-	-	3	1	-	4	6	7	18	39	29	28	30	41	44	42	28	26	-	-
1-066	Hypertensive Diseases	79	-	-	-	-	-	1	-	-	1	1	-	4	9	4	11	6	6	10	10	9	7	-	-
1-067	Ischaemic Heart Diseases	121	-	-	-	-	-	-	1	-	-	2	1	6	6	15	8	13	19	18	13	11	8	-	-
1-068	Other Heart Diseases	59	-	-	-	-	-	-	-	-	3	2	5	2	10	5	4	6	8	6	4	1	3	-	-
1-069	Cerebrovascular Diseases	73	-	-	-	-	-	2	-	-	-	1	1	4	9	5	4	3	6	8	15	7	8	-	-
1-071	Remainder of Diseases of the Circulatory System	14	-	-	-	-	-	-	-	-	-	-	-	2	5	-	1	2	2	2	-	-	-	-	-
1-072	DISEASES OF THE RESPIRATORY SYSTEM	47	4	1	1	-	-	1	-	-	-	1	1	1	-	2	1	2	6	4	10	5	7	-	-
1-074	Pneumonia	22	2	1	1	-	-	-	-	-	-	1	1	1	-	1	-	1	3	2	2	1	5	-	-
1-076	Chronic Lower Respiratory Diseases	10	-	-	-	-	-	1	-	-	-	-	-	-	-	-	-	1	1	1	4	1	1	-	-
1-077	Remainder of Diseases of the Respiratory System	15	2	-	-	-	-	-	-	-	-	-	-	-	-	1	1	-	2	1	4	3	1	-	-
1-078	DISEASES OF THE DIGESTIVE SYSTEM	54	1	1	-	-	-	-	-	-	2	-	4	-	7	6	7	7	6	5	6	2	-	-	-
1-079	Gastric and Duodenal Ulcer	6	-	-	-	-	-	-	-	-	-	-	-	-	1	-	1	-	-	1	3	-	-	-	-
1-080	Diseases of the Liver	26	-	-	-	-	-	-	-	-	1	-	4	-	2	4	5	5	4	1	-	-	-	-	-
1-081	Remainder of Diseases of the Digestive System	22	1	1	-	-	-	-	-	-	1	-	-	-	4	2	1	2	2	3	3	2	-	-	-
1-082	DISEASES OF THE SKIN AND SUBCUTANEOUS TISSUE	5	-	-	-	-	-	-	-	-	-	-	-	-	-	-	-	-	-	2	1	-	2	-	-
1-083	DISEASES OF THE MUSCULOSKELETAL SYSTEM AND CONNECTIVE TISSUE	10	-	-	-	-	-	-	-	-	2	-	1	1	2	-	-	-	-	-	1	-	3	-	-
1-084	DISEASES OF THE GENITOURINARY SYSTEM	26	-	-	-	-	-	-	-	-	-	-	-	1	3	1	-	-	3	1	6	5	6	-	-
1-085	Glomerular and Renal Tubulo-Interstitial Diseases	4	-	-	-	-	-	-	-	-	-	-	-	-	2	-	-	-	-	-	-	1	1	-	-
1-086	Remainder of Diseases of the Genitourinary System	22	-	-	-	-	-	-	-	-	-	-	-	1	1	1	-	-	3	1	6	4	5	-	-
1-092	CERTAIN CONDITIONS ORIGINATING IN THE PERINATAL PERIOD	11	11	-	-	-	-	-	-	-	-	-	-	-	-	-	-	-	-	-	-	-	-	-	-
1-093	CONGENITAL MALFUNCTIONS DEFORMATIONS AND CHROMOSOMAL ABNORMALITIES	6	3	1	-	-	1	-	-	-	-	1	-	-	-	-	-	-	-	-	-	-	-	-	-
1-094	SYMPTOMS SIGNS AND ABNORMAL CLINICAL AND LABORATORY FINDINGS NOT ELSEWHERE CLASSIFIED	13	-	-	-	1	-	-	1	-	-	-	1	3	1	2	-	1	-	-	-	-	3	-	-
1-095	EXTERNAL CAUSES OF MORBIDITY AND MORTALITY	207	-	-	3	2	-	2	1	19	32	28	27	22	20	16	8	14	7	1	3	1	-	1	-
1-096	Transportation Accidents	39	-	-	1	1	-	-	-	3	3	8	3	4	2	5	2	5	2	-	-	-	-	-	-
1-097	Falls	4	-	-	-	-	-	-	-	-	-	-	-	2	2	-	-	-	-	-	-	-	-	-	-
1-098	Accidental Drowning and Submersion	20	-	-	-	-	2	1	1	1	1	3	3	3	1	-	1	1	-	2	-	-	-	-	-
1-099	Exposure to Smoke Fire and Flames	4	-	-	-	1	-	-	-	-	-	-	1	-	1	-	1	-	-	-	-	-	-	-	-
1-100	Accidental Poisoning by and Exposure to Noxious Substances	1	-	-	-	-	-	-	-	-	1	-	-	-	-	-	-	-	-	-	-	-	-	-	-
1-101	Intentional Self-Harm	4	-	-	-	-	-	-	-	-	-	-	-	1	-	1	2	-	-	-	-	-	-	-	-
1-102	Assault	113	-	-	1	-	-	-	-	13	27	16	18	11	10	7	4	4	2	-	-	-	-	-	-
1-103	All Other External Causes	22	-	-	1	-	-	-	-	2	1	2	3	1	2	2	1	1	2	1	1	1	-	1	-
	TOTAL	1,139	26	4	6	4	1	5	7	26	39	39	40	48	61	97	95	96	81	96	103	110	74	81	-

REGISTERED DEATHS BY CAUSE AND AGE-GROUP OF DECEASED FEMALES, ALL BAHAMAS: 2013

TABLE 19

GENERAL MORTALITY LIST 1	LIST OF CAUSES FOR TABULATION OF MORTALITY, TENTH REVISION OF THE INTERNATIONAL CLASSIFICATION OF DISEASES	AGE-GROUP OF DECEASED																					NOT STATED		
		ALL AGES	UND	1	2	3	4	5-9	10-14	15-19	20-24	25-29	30-34	35-39	40-44	45-49	50-54	55-59	60-64	65-69	70-74	75-79		80-84	85+
		1	1	2	3	4	9	14	19	24	29	34	39	44	49	54	59	64	69	74	79	84		+	
1-001	CERTAIN INFECTIOUS AND PARASITIC DISEASES	92	4	1	-	-	-	-	1	1	3	1	11	6	9	13	8	4	1	2	3	7	8	-	
1-003	Diarrhoea and Gastroenteritis of Presumed Infectious Origin	1	1	-	-	-	-	-	-	-	-	-	-	-	-	-	-	-	-	-	-	-	-	-	
1-005	Respiratory Tuberculosis	1	-	-	-	-	-	-	-	-	-	-	-	-	-	-	-	-	-	-	-	-	1	-	
1-012	Septicaemia	29	1	1	-	-	-	-	-	-	-	-	1	1	-	3	1	2	1	2	3	6	7	-	
1-020	Human Immunodeficiency Virus [HIV] Disease	59	1	-	-	-	-	-	1	3	1	11	5	8	9	10	7	2	-	-	-	1	-	-	
1-025	Remainder of Certain Infectious and Parasitic Diseases	2	1	-	-	-	-	-	1	-	-	-	-	-	-	-	-	-	-	-	-	-	-	-	
1-026	NEOPLASMS	217	-	-	-	-	-	-	-	2	1	4	6	8	16	25	24	26	28	25	23	12	17	-	
1-027	Malignant Neoplasm of Lip Oral Cavity and Pharynx	1	-	-	-	-	-	-	-	-	-	-	-	-	-	-	-	-	-	-	-	-	1	-	
1-028	Malignant Neoplasm of Oesophagus	2	-	-	-	-	-	-	-	-	-	-	-	-	-	-	1	-	-	-	1	-	-	-	
1-029	Malignant Neoplasm of Stomach	11	-	-	-	-	-	-	-	-	-	1	-	-	-	-	1	-	2	2	1	1	3	-	
1-030	Malignant Neoplasm of Colon, Rectum and Anus	23	-	-	-	-	-	-	-	-	1	-	-	-	1	2	2	4	3	2	4	1	3	-	
1-031	Malignant Neoplasm of Liver and Intrahepatic Bile Ducts	2	-	-	-	-	-	-	-	-	-	-	-	-	-	-	-	-	-	1	-	1	-	-	
1-032	Malignant Neoplasm of Pancreas	2	-	-	-	-	-	-	-	-	-	-	-	-	-	1	-	1	-	-	-	-	-	-	
1-034	Malignant Neoplasm of Trachea Bronchus and Lung	10	-	-	-	-	-	-	-	-	-	-	1	-	1	1	3	1	1	1	1	1	-	-	
1-035	Malignant Melanoma of Skin	2	-	-	-	-	-	-	-	-	-	-	-	-	-	-	1	-	-	1	-	-	-	-	
1-036	Malignant Neoplasm of Breast	63	-	-	-	-	-	-	-	-	-	1	4	4	10	10	7	5	2	6	9	2	3	-	
1-037	Malignant Neoplasm of Cervix Uteri	23	-	-	-	-	-	-	-	-	-	-	-	1	2	9	2	2	3	-	3	1	-	-	
1-038	Malignant Neoplasm of Other and Unspecified Parts of Uterus	16	-	-	-	-	-	-	-	-	-	-	-	-	-	3	2	5	6	-	-	-	-	-	
1-039	Malignant Neoplasm of Ovary	10	-	-	-	-	-	-	-	-	-	1	-	-	1	1	2	2	-	1	-	-	1	-	
1-040	Malignant Neoplasms of Prostate	1	-	-	-	-	-	-	-	-	-	-	-	-	-	-	-	-	1	-	-	-	-	-	
1-041	Malignant Neoplasm of Bladder	3	-	-	-	-	-	-	-	-	-	-	-	-	-	-	-	1	1	1	-	-	-	-	
1-042	Malignant Neoplasm of Meninges Brain and Other Parts of the Central Nervous System																								
1-043	Non-Hodgkin's Lymphoma	2	-	-	-	-	-	-	-	-	-	-	1	-	-	-	-	-	-	-	-	-	1	-	
1-044	Multiple Myeloma and Malignant Plasma Cell Neoplasms	7	-	-	-	-	-	-	-	-	-	-	-	-	-	1	-	1	2	1	1	1	-	-	
1-045	Leukaemias	5	-	-	-	-	-	-	-	-	-	1	1	-	-	-	1	2	-	-	-	-	-	-	
1-046	Remainder of Malignant Neoplasms	28	-	-	-	-	-	-	-	1	-	1	1	-	1	1	3	3	7	2	3	2	3	-	
1-047	Remainder of Neoplasms	6	-	-	-	-	-	-	-	1	-	-	-	-	1	-	-	2	-	-	-	1	1	-	
1-048	DISEASES OF THE BLOOD AND BLOOD-FORMING ORGANS AND CERTAIN DISORDERS INVOLVING THE IMMUNE MECHANISM	6	-	-	-	-	-	-	-	1	-	1	1	-	-	-	-	1	-	1	-	-	1	-	
1-049	Anaemias	5	-	-	-	-	-	-	-	1	-	1	1	-	-	-	-	-	-	1	-	-	1	-	
1-050	Remainder of Diseases of the Blood and Blood-Forming Organs and Certain Disorders Involving the Immune Mechanism	1	-	-	-	-	-	-	-	-	-	-	-	-	-	-	-	1	-	-	-	-	-	-	
1-051	ENDOCRINE NUTRITIONAL AND METABOLIC DISEASES	82	-	-	-	-	-	-	1	1	-	3	1	1	4	2	6	5	6	7	13	12	20	-	

REGISTERED DEATH BY CAUSE AND AGE-GROUP OF DECEASED FEMALES, ALL BAHAMAS: 2013

TABLE 19 (Cont'd)

GENERAL MORTALITY LIST 1	LIST OF CAUSES FOR TABULATION OF MORTALITY, TENTH REVISION OF THE INTERNATIONAL CLASSIFICATION OF DISEASES	AGE-GROUP OF DECEASED																							
		ALL	UND					5-	10	15-	20-	25-	30	35-	40-	45	50	55	60-	65-	70-	75	80	85	NOT
		AGES	1	1	2	3	4	9	14	19	24	29	34	39	44	49	54	59	64	69	74	79	84	+	STATED
1-052	Diabetes Mellitus	56	-	-	-	-	-	-	-	1	-	3	1	1	2	2	5	5	5	5	8	6	12	-	
1-053	Malnutrition	6	-	-	-	-	-	-	-	-	-	-	-	-	1	-	-	-	-	-	1	1	3	-	
1-054	Remainder of Endocrine Nutritional and Metabolic Diseases	20	-	-	-	-	-	-	1	-	-	-	-	-	1	-	1	-	1	2	4	5	5	-	
1-055	MENTAL AND BEHAVIOURAL DISORDERS	2	-	-	-	-	-	-	-	-	-	-	-	-	-	1	-	-	-	-	-	-	1	-	
1-056	Mental and Behavioural Disorders Due to Psychoactive Substance Use	1	-	-	-	-	-	-	-	-	-	-	-	-	-	1	-	-	-	-	-	-	-	-	
1-057	Remainder of Mental and Behavioural Disorders	1	-	-	-	-	-	-	-	-	-	-	-	-	-	-	-	-	-	-	-	-	1	-	
1-058	DISEASES OF THE NERVOUS SYSTEM	26	-	-	-	-	-	-	-	-	-	-	1	2	1	1	2	1	1	-	4	3	10	-	
1-060	Alzheimer's Disease	12	-	-	-	-	-	-	-	-	-	-	-	-	-	-	-	-	1	-	1	2	8	-	
1-061	Remainder of Diseases of the Nervous system	14	-	-	-	-	-	-	-	-	-	-	1	2	1	1	2	1	-	-	3	1	2	-	
1-064	DISEASES OF THE CIRCULATORY SYSTEM	274	-	-	-	-	-	1	-	1	1	2	6	1	12	19	21	13	23	32	40	38	64	-	
1-065	Acute Rheumatic Fever and Chronic Rheumatic Heart Diseases	1	-	-	-	-	-	-	-	-	1	-	-	-	-	-	-	-	-	-	-	-	-	-	
1-066	Hypertensive Diseases	70	-	-	-	-	-	-	-	-	-	1	2	-	1	5	5	6	5	8	7	13	17	-	
1-067	Ischaemic Heart Diseases	77	-	-	-	-	-	-	-	-	-	-	2	-	5	2	7	6	7	11	12	10	15	-	
1-068	Other Heart Diseases	36	-	-	-	-	-	-	-	-	-	-	2	1	-	4	1	1	4	3	5	5	10	-	
1-069	Cerebrovascular Diseases	73	-	-	-	-	1	-	-	1	-	1	-	-	1	6	3	-	7	10	15	10	18	-	
1-070	Atherosclerosis	1	-	-	-	-	-	-	-	-	-	-	-	-	-	-	1	-	-	-	-	-	-	-	
1-071	Remainder of Diseases of the Circulatory System	16	-	-	-	-	-	-	-	-	-	-	-	-	5	2	4	-	-	-	1	-	4	-	
1-072	DISEASES OF THE RESPIRATORY SYSTEM	47	1	1	-	-	1	-	-	-	1	1	3	1	-	2	4	1	2	8	4	4	13	-	
1-074	Pneumonia	26	-	1	-	-	1	-	-	-	-	1	3	1	-	-	2	1	1	2	1	2	10	-	
1-076	Chronic Lower Respiratory Diseases	2	-	-	-	-	-	-	-	-	-	-	-	-	-	-	-	-	-	1	1	-	-	-	
1-077	Remainder of Diseases of the Respiratory System	19	1	-	-	-	-	-	-	-	1	-	-	-	-	2	2	-	1	5	2	2	3	-	
1-078	DISEASES OF THE DIGESTIVE SYSTEM	37	1	-	-	-	1	-	-	1	1	1	1	-	3	2	4	4	3	-	8	1	6	-	
1-079	Gastric and Duodenal Ulcer	2	-	-	-	-	-	-	-	-	-	-	-	-	-	-	-	1	-	-	1	-	-	-	
1-080	Diseases of the Liver	19	-	-	-	-	1	-	-	1	1	1	1	-	1	2	3	3	1	-	3	1	-	-	
1-081	Remainder of Diseases of the Digestive System	16	1	-	-	-	-	-	-	-	-	-	-	-	2	-	1	-	2	-	4	-	6	-	
1-082	DISEASES OF THE SKIN AND SUBCUTANEOUS TISSUE	12	-	-	-	-	-	-	-	-	-	-	-	1	-	-	1	2	-	-	-	4	4	-	
1-083	DISEASES OF THE MUSCULOSKELETAL SYSTEM AND CONNECTIVE TISSUE	13	-	-	-	-	-	1	1	-	1	-	-	3	-	1	3	1	1	-	-	1	-	-	

REGISTERED DEATHS BY CAUSE AND AGE-GROUP OF DECEASED FEMALES, ALL BAHAMAS: 2013

TABLE 19 (Cont'd)

GENERAL MORTALITY LIST 1	LIST OF CAUSES FOR TABULATION OF MORTALITY, TENTH REVISION OF THE INTERNATIONAL CLASSIFICATION OF DISEASES	AGE-GROUP OF DECEASED																							
		ALL AGES	UND 1	1	2	3	4	5-9	10-14	15-19	20-24	25-29	30-34	35-39	40-44	45-49	50-54	55-59	60-64	65-69	70-74	75-79	80-84	85-+	NOT STATED
1-084	DISEASES OF THE GENITOURINARY SYSTEM	32	1	-	-	-	-	-	-	-	-	-	-	1	-	1	2	1	2	1	4	3	4	12	-
1-085	Glomerular and Renal Tubulo-Interstitial Diseases	4	-	-	-	-	-	-	-	-	-	-	-	-	-	-	1	1	-	1	-	-	1	-	-
1-086	Remainder of Diseases of the Genitourinary System	28	1	-	-	-	-	-	-	-	-	-	-	1	-	1	1	-	2	-	4	3	3	12	-
1-087	PREGNANCY CHILDBIRTH AND THE PUERPERIUM	4	-	-	-	-	-	-	-	-	-	2	-	1	-	-	-	-	-	-	-	-	1	-	-
1-089	Other Direct Obstetric Deaths	2	-	-	-	-	-	-	-	-	-	1	-	-	-	-	-	-	-	-	-	-	1	-	-
1-090	Indirect Obstetric Deaths	2	-	-	-	-	-	-	-	-	-	1	-	1	-	-	-	-	-	-	-	-	-	-	-
1-092	CERTAIN CONDITIONS ORIGINATING IN THE PERINATAL PERIOD	11	11	-	-	-	-	-	-	-	-	-	-	-	-	-	-	-	-	-	-	-	-	-	-
1-093	CONGENITAL MALFUNCTIONS DEFORMATIONS AND CHROMOSOMAL ABNORMALITIES	9	5	-	-	-	-	1	-	-	-	1	1	-	1	-	-	-	-	-	-	-	-	-	-
1-094	SYMPTOMS SIGNS AND ABNORMAL CLINICAL AND LABORATORY	13	2	-	-	-	-	1	-	-	-	1	1	-	-	1	1	-	-	-	-	-	-	6	-
1-095	EXTERNAL CAUSES OF MORBIDITY AND MORTALITY	49	-	-	1	-	-	-	1	5	4	2	7	4	2	1	3	1	3	2	3	3	4	3	-
1-096	Transportation Accidents	15	-	-	-	-	-	-	-	5	-	-	2	-	2	1	1	1	2	-	-	-	1	-	-
1-097	Falls	1	-	-	-	-	-	-	-	-	-	-	-	-	-	-	-	-	-	-	-	-	1	-	-
1-098	Accidental Drowning and Submersion	5	-	-	-	-	-	-	-	-	1	1	1	1	-	-	-	-	1	-	-	-	-	-	-
1-101	Intentional Self-Harm	1	-	-	-	-	-	-	-	-	-	-	-	1	-	-	-	-	-	-	-	-	-	-	-
1-102	Assault	12	-	-	-	-	-	-	1	-	1	1	4	2	-	-	1	-	-	1	1	-	-	-	-
1-103	All Other External Causes	15	-	-	1	-	-	-	-	-	2	-	-	-	-	-	1	-	-	1	2	3	2	3	-
	TOTAL	926	25	2	1	-	-	5	3	8	13	9	34	31	30	47	72	76	63	68	82	101	91	165	-

**SECTION IV
MARRIAGES**

MARRIAGES BY ISLAND AND MONTH OF OCCURRENCE, ALL BAHAMAS: 2013

TABLE 20

ISLAND OF OCCURRENCE	TOTAL	MONTH OF OCCURRENCE												
		JAN	FEB	MAR	APR	MAY	JUN	JUL	AUG	SEP	OCT	NOV	DEC	NOT STATED
NEW PROVIDENCE	1637	86	93	131	128	125	135	177	131	103	129	200	199	-
GRAND BAHAMA	265	13	17	28	31	19	29	22	31	15	13	20	27	-
ABACO	105	5	6	11	10	6	11	3	12	11	11	10	9	-
ACKLINS	1	-	-	-	-	-	-	-	-	-	-	-	1	-
ANDROS	16	1	-	1	-	-	2	1	5	1	-	1	4	-
BERRY ISLANDS	-	-	-	-	-	-	-	-	-	-	-	-	-	-
BIMINIS	6	-	-	-	-	1	1	-	2	1	-	-	1	-
CAT ISLAND	-	-	-	-	-	-	-	-	-	-	-	-	-	-
CROOKED ISLAND	-	-	-	-	-	-	-	-	-	-	-	-	-	-
ELEUTHERA	50	2	4	3	5	7	5	5	4	2	3	3	7	-
EXUMA AND CAYS	26	-	3	1	2	2	2	2	1	1	2	8	2	-
HARBOUR ISLAND	1	-	-	-	-	-	-	-	-	-	-	1	-	-
INAGUA	1	-	-	-	-	-	-	1	-	-	-	-	-	-
LONG ISLAND	3	2	-	-	-	-	1	-	-	-	-	-	-	-
MAYAGUANA	-	-	-	-	-	-	-	-	-	-	-	-	-	-
RAGGED ISLAND	-	-	-	-	-	-	-	-	-	-	-	-	-	-
SAN SALVADOR AND RUM CAY	2	-	-	-	1	-	-	-	-	-	-	-	1	-
SPANISH WELLS	9	1	-	-	-	2	-	2	-	-	2	1	1	-
ABROAD	-	-	-	-	-	-	-	-	-	-	-	-	-	-
NOT STATED	-	-	-	-	-	-	-	-	-	-	-	-	-	-
TOTAL	2,122	110	123	175	176	163	186	213	186	134	160	244	252	-

**MARRIAGES BY PREVIOUS MARITAL STATUS OF BRIDE
AND BRIDEGROOM, ALL BAHAMAS: 2013**

TABLE 21

PREVIOUS MARITAL STATUS OF BRIDE	PREVIOUS MARITAL STATUS OF GROOM				
	TOTAL	SINGLE	WIDOWED	DIVORCED	NOT STATED
SINGLE	1,813	1,595	-	218	-
WIDOWED	-	-	-	-	-
DIVORCED	309	151	-	158	-
NOT STATED	-	-	-	-	-
TOTAL	2,122	1,746	-	376	-

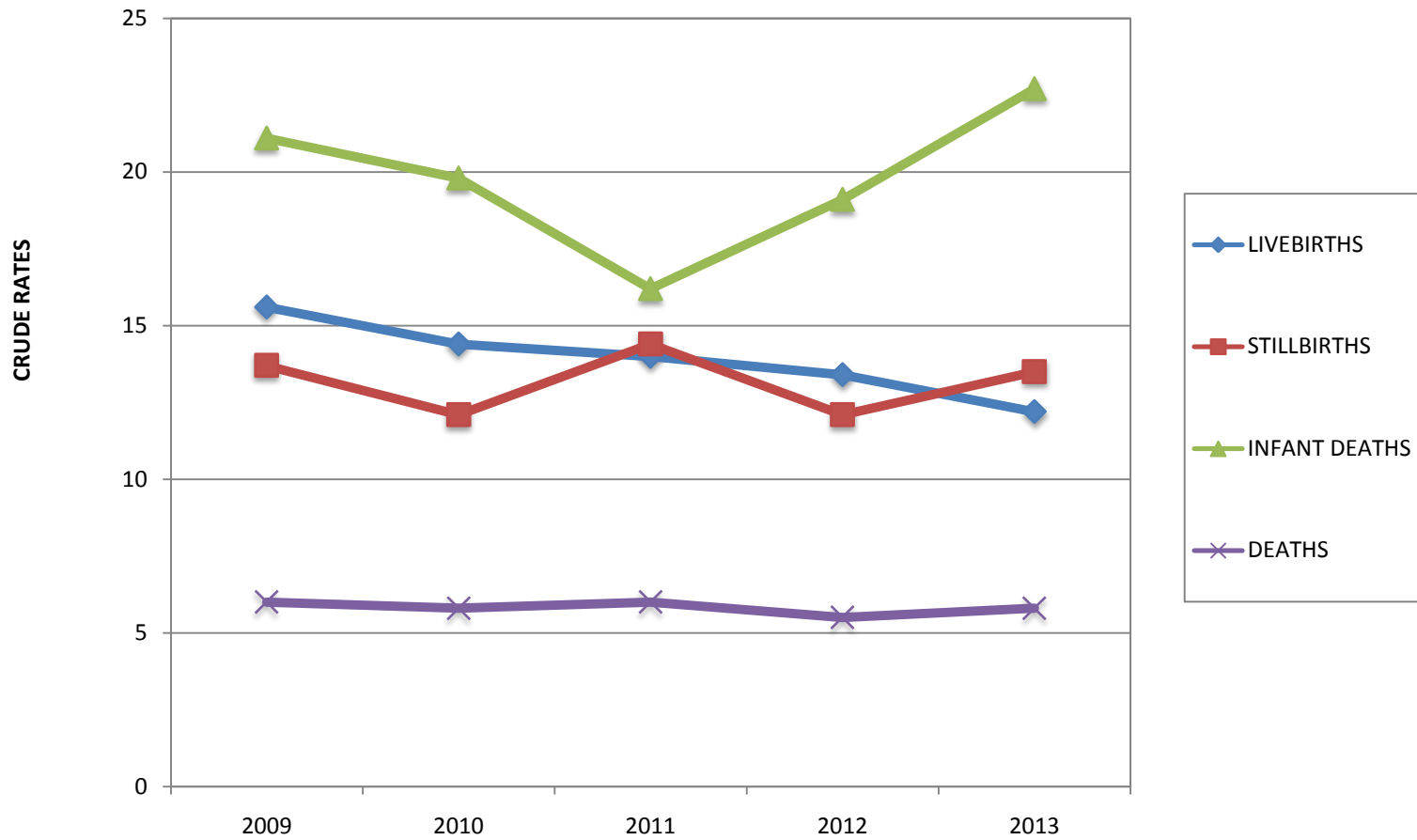
MARRIAGES BY AGE-GROUP OF BRIDE AND BRIDEGROOM, ALL BAHAMAS: 2013

TABLE 22

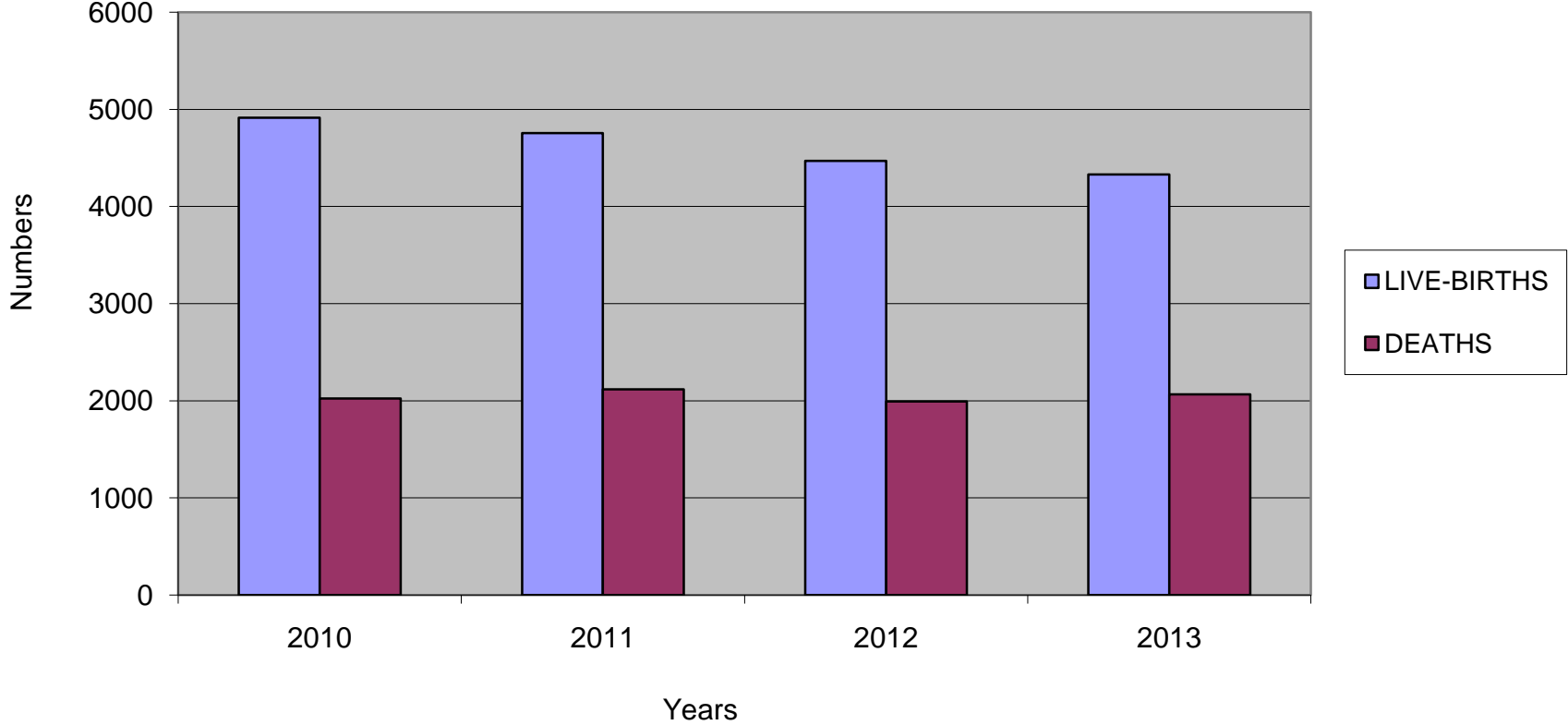
AGE-GROUP OF BRIDE AT TIME OF MARRIAGE	AGE-GROUP OF BRIDEGROOM AT TIME OF MARRIAGE											
	TOTAL	15 - 19	20 - 24	25 - 29	30 - 34	35 - 39	40 - 44	45 - 49	50 - 54	55 - 59	60 +	NOT STATED
15 - 19	-	-	-	-	-	-	-	-	-	-	-	-
20 - 24	-	-	-	-	-	-	-	-	-	-	-	-
25 - 29	171	-	-	24	64	39	16	3	5	-	20	-
30 - 34	543	-	-	27	202	161	62	42	13	12	24	-
35 - 39	391	-	-	9	61	131	87	48	24	12	18	1
40 - 44	249	-	-	5	21	53	70	50	28	9	13	-
45 - 49	219	-	-	5	24	33	28	38	44	23	24	-
50 - 54	192	-	-	6	21	28	26	22	38	21	30	-
55 - 59	133	-	-	6	17	20	17	9	6	18	39	1
60 +	216	-	-	22	62	33	17	10	4	11	56	1
NOT STATED	8	-	-	-	-	-	2	1	1	-	2	2
TOTAL	2,122	-	-	104	472	498	325	223	163	106	226	5

CHARTS

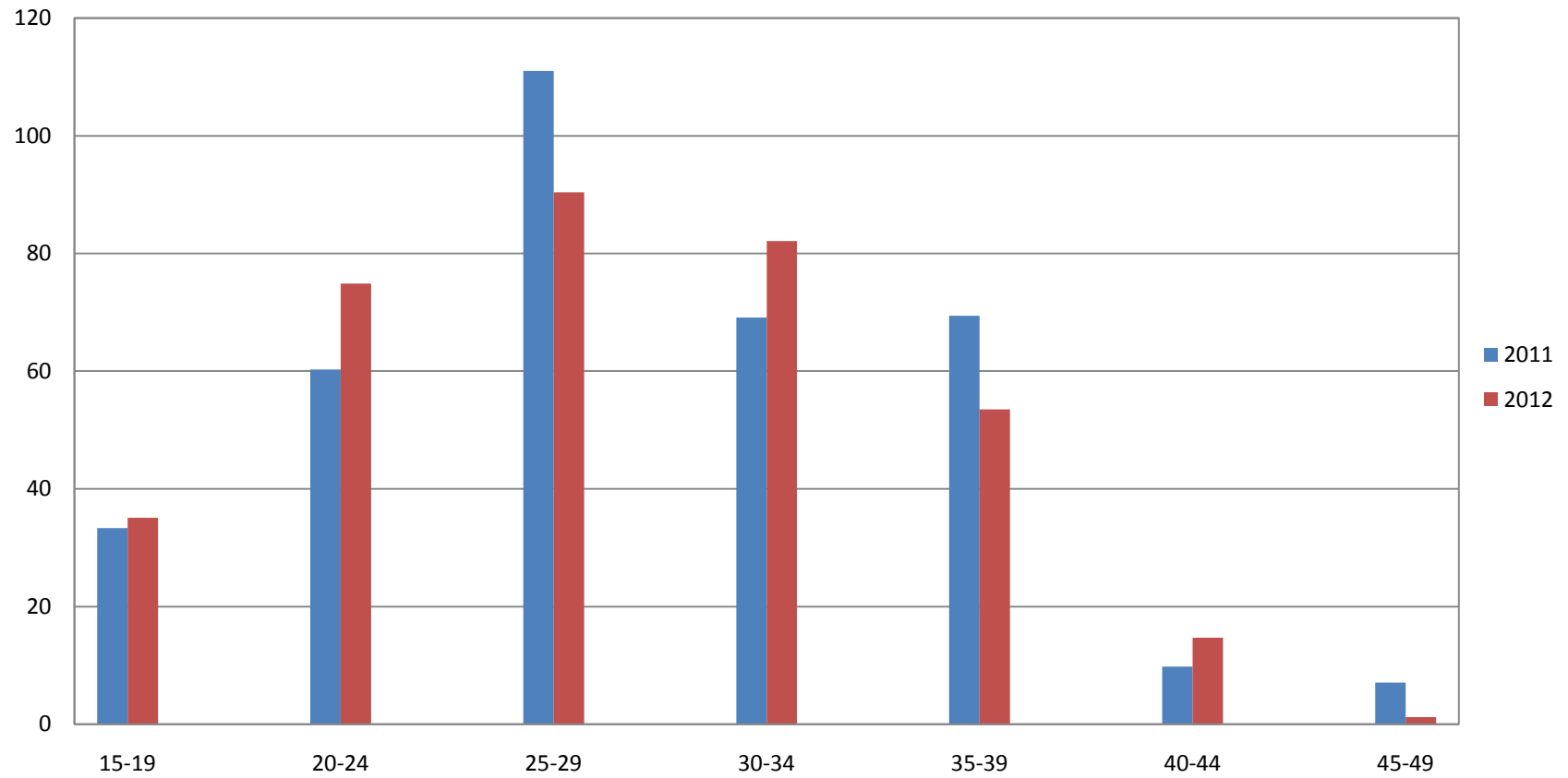
**CHART I SELECTED VITAL EVENTS RATES
ALL BAHAMAS: 2009 - 2013**



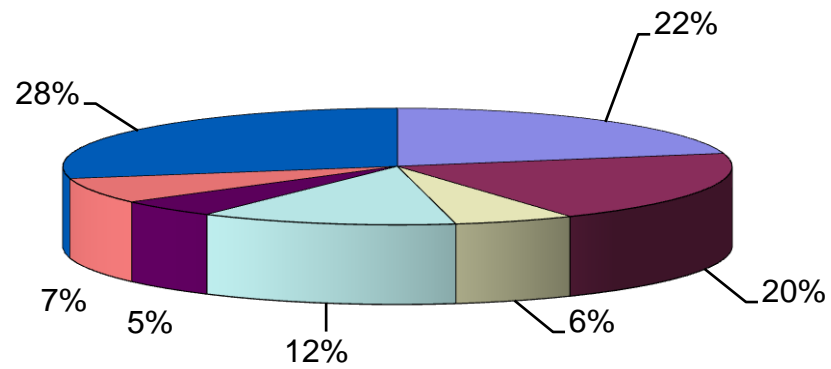
**CHART II REGISTERED LIVE-BIRTHS AND DEATHS,
ALL BAHAMAS: 2010 - 2013**



**CHART III AGE-SPECIFIC FERTILITY RATES BASED ON LIVE BIRTHS OCCURENCES,
ALL BAHAMAS: 2011 - 2012**



**CHART IV MAJOR CAUSES OF DEATH BY PERCENTAGE DISTRIBUTION,
ALL BAHAMAS: 2013**



■ HEART DISEASES

■ NEOPLASMS (CANCER)

■ ACQUIRED IMMUNODEFICIENCY VIRUS

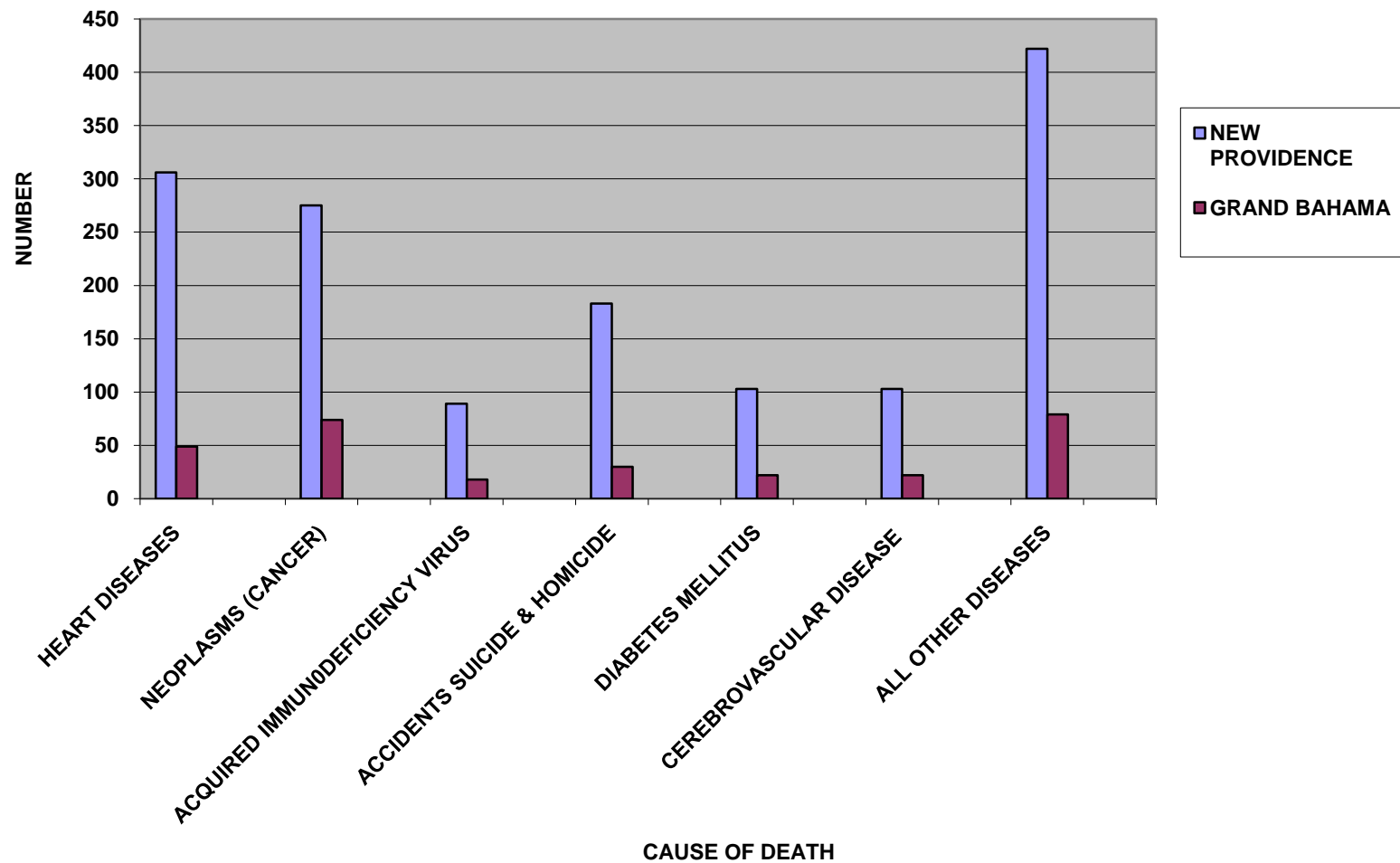
■ ACCIDENTS SUICIDE & HOMICIDE

■ DIABETES MELLITUS

■ CEREBROVASCULAR DISEASE

■ ALL OTHER DISEASES

**CHART V MAJOR CAUSES OF DEATH,
NEW PROVIDENCE & GRAND BAHAMA: 2013**



APPENDIX

DEFINITIONS

The United Nations “Handbook of Vital Statistics Methods” makes the following recommendations for the definitions of the vital events analyzed in this report.

- **LIVE BIRTH** is the complete expulsion or extraction from its mother of a product of conception, irrespective of the duration of pregnancy, which after separation, breathes or shows any other evidence of life, such as beating of the heart, pulsation of the umbilical cord, or definite movement of voluntary muscles whether or not the umbilical cord has been cut or the placenta is attached; each product of such a birth is considered live-born.

All live-born infants should be registered and counted as such irrespective of the period of gestation or whether alive or dead at the time of registration, and if they die at any time following birth they should also be registered and counted as deaths.

In the event of a legitimate birth the names of both the mother and the father are recorded on the birth registration form. For an illegitimate birth, the name of the mother only is recorded, except where a joint application for the name of the father to be recorded, has been made by both parents.

- **DEATH** is the permanent disappearance of all evidence of life at any time after live-birth has taken place (post-natal cessation of vital functions without capability of resuscitation). This definition therefore, excludes foetal deaths.
- **FOETAL DEATH** is death prior to the complete expulsion or extraction from its mother of a product of conception, irrespective of the duration of pregnancy; the death is indicated by the fact that after such separation the foetus does not breathe or show any other evidence of life, such as beating of the heart, pulsation of the umbilical cord, or definite movement of voluntary muscles.
- **STILLBIRTH** refers to a “late foetal death” or the death prior to complete expulsion or extraction from its mother of a product of conception, which has attained 22 or more completed weeks of gestation, the death is indicated by the fact that after such separation, the foetus does not breathe or show any other evidence of life.

A stillbirth (or late foetal death) is registered as both a birth and a death, the sex of the stillborn child being recorded if possible. However, stillbirths are classified separately in the report and are not included with the other deaths or live-births

- **INFANT DEATH** is the number of deaths before the first birthday has been attained.
- **MARRIAGE** is the legal union of persons of the opposite sex. The legality of union may be established by civil, religious, or other means as recognized by the laws of each country; and irrespective of the type of marriage, each should be reported for vital statistics purposes.
- **DIVORCE** is the final legal dissolution of a marriage, which is the separation of husband and wife by a judicial decree, which confers on the parties the right to civil and /or religious remarriage, according to the law of each country.

DEFINITIONS OF FERTILITY AND REPRODUCTION RATES

CRUDE BIRTH RATE (CBR)

The CBR indicates the number of live births per 1000 population in a given year. Most annual rates relate demographic events to the population at mid-year which is considered to be the average population at risk during the year. Births are only one component of population change, therefore the birth rate should not be confused with the growth rate which includes all components of change.

General Fertility Rate (GFR)

The GFR is a more refined measure than the crude birth rate because it relates births more closely to the age-sex group at risk of giving birth (i.e., women 15-49 years of age). This eliminates distortions that might arise because of different age and sex distributions in a total population. The general fertility rate is more indicative of changes in fertility behavior than is the crude live-birth rate.

Total Fertility Rate (TFR)

This is the average number of children that would be born alive to a woman (or a group of women) during her lifetime if she was to pass through all her childbearing years conforming to the age-specific fertility rates of a given year. The TFR sums up in a single number the fertility of all women at a given point in time. In effect, it says: This is the total number of children a woman would have if she had the same chance of having a birth at age 15-19 as all women that age in a given year; at age 20-24 as all women that same year; at age 25-29, and so forth up to age 49.

Gross Reproduction Rate (GRR)

The GRR is the average number of daughters that would be born to a woman (or group of women) during her lifetime if she passed through her childbearing years conforming to the age-specific fertility rates of a given year. This rate is like the TFR except that it counts only daughters and literally measures “reproduction” – a woman reproducing herself by having a daughter.

Net Reproduction Rate (NRR)

The NRR is the average number of daughters would be born to a woman (or group of women) if she passed through her lifetime from birth conforming to the age-specific fertility and mortality rates of a given year. This rate is similar to the gross reproduction rate, but is always lower than the GRR because it takes into account the fact that some women will die before completing their childbearing years.

THE CALCULATION OF RATES (TABLE 1)

Crude Live-Birth Rate	=	Number of live-births which occurred among the population <u>during a given year</u>	X 1000
		Mid-year population for the same Year.	
General Fertility Rate	=	Number of live-births which occurred among the population <u>during a given year</u>	X 1000
		Number of women of Child bearing age (15-49) in the same population.	
Total Fertility Rate	=	The sum of the age-specific fertility rates per 1,000 women of child-bearing age times five (5).	

Gross Reproduction Rate	= The total fertility rate in a given year times the proportion of total births that were female in a given year.	
Net Reproduction Rate	= The sum of the multiplications of (a) each five-year age specific fertility rate including only female live-birth and (b) the number of person-years lived in the female stationary population (1999-2001 Life Table for the Bahamas) for the age interval corresponding to the fertility rate (c) divided by 100,000 (i.e. 100,000 new born baby girls).	
Crude Death Rate	= Number of deaths which occurred among the population during a <u>given year</u> Mid-year population for the same year.	X 1000
Infant Mortality Rate	= Number of deaths under 1 year of age which occurred among the <u>population during a given year</u> Number of live-births which occurred among the population during the same year.	X 1000
Stillbirth (Late Foetal Death) Rate	= Number of foetal deaths of 22 or more completed weeks of gestation which occurred among the population during a given <u>Year</u> Number of live-births which occurred among the population during the same year.	X 1000
Perinatal Mortality Rate	= Number of foetal deaths of 22 or more completed weeks of gestation plus the number of infant deaths to those aged under 7 days occurring among the <u>population during a given year</u> Number of live-deaths which occurred among the population during the same year.	X 1000

This is a definition that can vary. There is no general agreement as to the range of infant mortality, which should be included. In the report the rates are calculated as defined above, but other perinatal rates may be calculated to include infant deaths aged less than 28 weeks.

Neo-natal Mortality Rate = Number of deaths under 28 days of age which occurred among the population during a given year X 1000
Number of live-births which occurred among the population during the same year.

Natural Increase Rate = Subtract the crude death rate from the crude birth rate. Example, in 2008 the Natural Increase Rate per thousand was 16.2 – 5.2 = **11.0**.

Crude Marriage Rate = Number of marriages occurred among the population during the given year X 1000
Mid-year population for the same year.

Crude Divorce Rate = Number of divorces which occurred among the population during a given year X 1000
Mid-year population for the same year.