

The Ten Leading Causes of Inpatient Morbidity Sandilands Rehabilitation Centre, 2012

Rank	Principal Cause (ICD10 Code)	Number	Percent (%)
1	Schizophrenia (F20)	240	24.6
2	Mental and behavioural disorders due to use of cannabinoids (F12)	142	14.6
3	Mental and behavioural disorders due to multiple drug use and use of other psychoactive substances (F19)	107	11.0
4	Bipolar affective disorder (F31)	101	10.4
5	Schizoaffective disorders (F25)	94	9.6
6	Mental and behavioural disorders due to use of alcohol (F10)	93	9.5
7	Acute and transient psychotic disorders (F23)	38	3.9
8	Depressive episode (F32)	28	2.9
9	Mental and behavioural disorders due to use of cocaine (F14)	25	2.6
10	Unspecified Mental Retardation (F79)	22	2.3
Total, Ten Leading Causes		890	91.3
Total, Defined Causes		975	100.0
Factors Influencing Health Status and Contact with Health Services (Z00-Z99)		68	
Symptoms, Signs, and Ill-Defined Conditions (R00-R99)		8	
Total Records Processed		1,051	

- N.B.** 1) The leading causes were compiled according to the Pan American Health Organization's (PAHO) Standard Mortality Listing for ICD10.
 2) The leading causes exclude Symptoms, Signs, and Ill-Defined Conditions, and Factors Influencing Health Status and Contact with Health Services.
 3) The percent (%) is the percent of **defined** causes, which includes all causes except Symptoms, Signs, and Ill-defined conditions, and Factors Influencing Health Status and contact with Health Services.
 4) The data are considered preliminary.

Source : Keane Information System, Public Hospitals Authority
Prepared By : Health Information and Research Unit, 01/2014

**The Ten Leading Causes of Inpatient Morbidity for Males
Sandilands Rehabilitation Centre, 2012**

Rank	Principal Cause (ICD10 Code)	Number	Percent (%)
1	Schizophrenia (F20)	188	26.4
2	Mental and behavioural disorders due to use of cannabinoids (F12)	138	19.4
3	Mental and behavioural disorders due to multiple drug use and use of other psychoactive substances (F19)	85	11.9
4	Mental and behavioural disorders due to use of alcohol (F10)	79	11.1
5	Schizoaffective disorders (F25)	58	8.1
6	Bipolar affective disorder (F31)	49	6.9
7	Acute and transient psychotic disorders (F23)	32	4.5
8	Mental and behavioural disorders due to use of cocaine (F14)	23	3.2
9	Unspecified Mental Retardation (F79)	16	2.2
10	Depressive episode (F32)	8	1.1
Total, Ten Leading Causes		676	94.8
Total, Defined Causes		713	100.0
Factors Influencing Health Status and Contact with Health Services (Z00-Z99)		55	
Symptoms, Signs, and Ill-Defined Conditions (R00-R99)		4	
Total Records Processed		772	

**The Ten Leading Causes of Inpatient Morbidity for Females
Sandilands Rehabilitation Centre, 2012**

Rank	Principal Cause (ICD10 Code)	Number	Percent (%)
1	Schizophrenia (F20)	52	19.8
1	Bipolar affective disorder (F31)	52	19.8
3	Schizoaffective disorders (F25)	36	13.7
4	Mental and behavioural disorders due to multiple drug use and use of other psychoactive substances (F19)	22	8.4
5	Depressive episode (F32)	20	7.6
6	Unspecified nonorganic psychosis (F29)	16	6.1
7	Mental and behavioural disorders due to use of alcohol (F10)	14	5.3
8	Reaction to severe stress, and adjustment disorders (F43)	7	2.7
9	Acute and transient psychotic disorders (F23)	6	2.3
9	Unspecified Mental Retardation (F79)	6	2.3
Total, Ten Leading Causes		231	88.2
Total, Defined Causes		262	100.0
Factors Influencing Health Status and Contact with Health Services (Z00-Z99)		13	
Symptoms, Signs, and Ill-Defined Conditions (R00-R99)		4	
Total Records Processed		279	

- N.B.** 1) The leading causes were compiled according to the Pan American Health Organization's (PAHO) Standard Mortality Listing for ICD10.
 2) The leading causes exclude Symptoms, Signs, and Ill-Defined Conditions, and Factors Influencing Health Status and Contact with Health Services.
 3) The percent (%) is the percent of *defined* causes, which includes all causes except Symptoms, Signs, and Ill-defined conditions, and Factors Influencing Health Status and contact with Health Services.
 4) The data are considered preliminary.

Source : Keane Information System, Public Hospitals Authority

Prepared By : Health Information and Research Unit, 01/2014

**The Five Leading Causes of Inpatient Morbidity for Patients Under 25 Years
Sandilands Rehabilitation Centre, 2012**

Rank	Principal Cause (ICD10 Code)	Number	Percent (%)
1	Mental and behavioural disorders due to use of cannabinoids (F12)	82	39.2
2	Schizophrenia (F20)	30	14.4
3	Mental and behavioural disorders due to multiple drug use and use of other psychoactive substances (F19)	12	5.7
4	Depressive episode (F32)	10	4.8
5	Bipolar affective disorder (F31)	9	4.3
5	Conduct disorders (F91)	9	4.3
Total, Ten Leading Causes		152	72.7
Total, Defined Causes		209	100.0
Factors Influencing Health Status and Contact with Health Services (Z00-Z99)		54	
Symptoms, Signs, and Ill-Defined Conditions (R00-R99)		3	
Total Records Processed		266	

**The Ten Leading Causes of Inpatient Morbidity for Patients 25 to 44 Years
Sandilands Rehabilitation Centre, 2012**

Rank	Principal Cause (ICD10 Code)	Number	Percent (%)
1	Schizophrenia (F20)	134	27.0
2	Bipolar affective disorder (F31)	64	12.9
3	Mental and behavioural disorders due to use of cannabinoids (F12)	55	11.1
3	Schizoaffective disorders (F25)	55	11.1
5	Mental and behavioural disorders due to multiple drug use and use of other psychoactive substances (F19)	53	10.7
Total, Ten Leading Causes		361	72.6
Total, Defined Causes		497	100.0
Factors Influencing Health Status and Contact with Health Services (Z00-Z99)		10	
Symptoms, Signs, and Ill-Defined Conditions (R00-R99)		3	
Total Records Processed		510	

**The Ten Leading Causes of Inpatient Morbidity for Patients 45 to 64 Years
Sandilands Rehabilitation Centre, 2012**

Rank	Principal Cause (ICD10 Code)	Number	Percent (%)
1	Schizophrenia (F20)	68	28.5
2	Mental and behavioural disorders due to multiple drug use and use of other psychoactive substances (F19)	41	17.2
3	Mental and behavioural disorders due to use of alcohol (F10)	39	16.3
4	Schizoaffective disorders (F25)	28	11.7
5	Bipolar affective disorder (F31)	25	10.5
Total, Ten Leading Causes		201	84.1
Total, Defined Causes		239	100.0
Factors Influencing Health Status and Contact with Health Services (Z00-Z99)		3	
Symptoms, Signs, and Ill-Defined Conditions (R00-R99)		2	
Total Records Processed		244	

**The Ten Leading Causes of Inpatient Morbidity for Patients 65 Years and Older
Sandilands Rehabilitation Centre, 2012**

Rank	Principal Cause (ICD10 Code)	Number	Percent (%)
1	Schizophrenia (F20)	8	26.7
2	Schizoaffective disorders (F25)	5	16.7
3	Unspecified dementia (F03)	4	13.3
4	Mental and behavioural disorders due to use of alcohol (F10)	3	10.0
4	Bipolar affective disorder (F31)	3	10.0
Total, Ten Leading Causes		23	76.7
Total, Defined Causes		30	100.0
Factors Influencing Health Status and Contact with Health Services (Z00-Z99)		1	
Symptoms, Signs, and Ill-Defined Conditions (R00-R99)		0	
Total Records Processed		31	

N.B. 1) The leading causes were compiled according to the Pan American Health Organization's (PAHO) Standard Mortality Listing for ICD10.

2) The leading causes exclude Symptoms, Signs, and Ill-Defined Conditions, and Factors Influencing Health Status and Contact with Health Services.

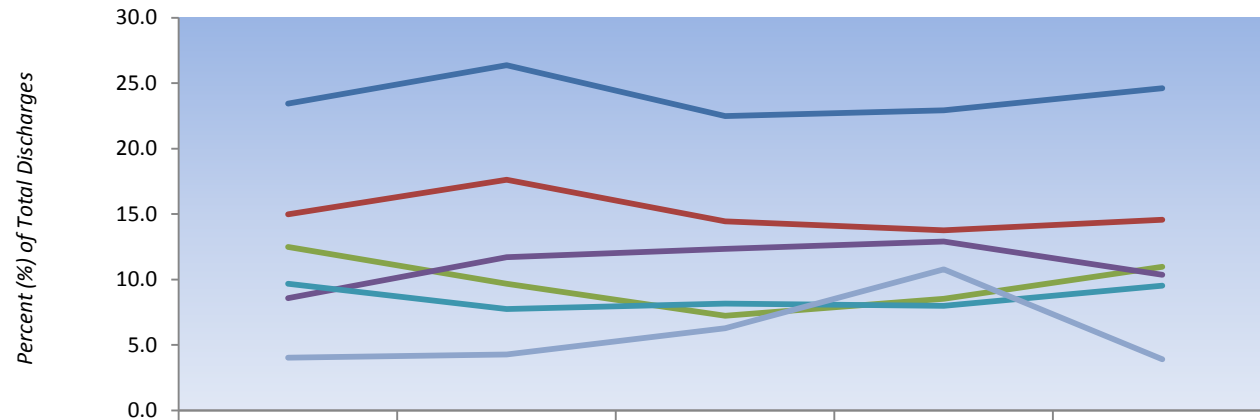
3) The percent (%) is the percent of *defined* causes, which includes all causes except Symptoms, Signs, and Ill-defined conditions, and Factors Influencing Health Status and contact with Health Services.

4) The data are considered preliminary.

Source : Keane Information System, Public Hospitals Authority

Prepared By : Health Information and Research Unit, 01/2014

**Trends (%) in Total Discharges for Selected Illnesses
Sandilands Rehabilitation Centre, 2008-2012**



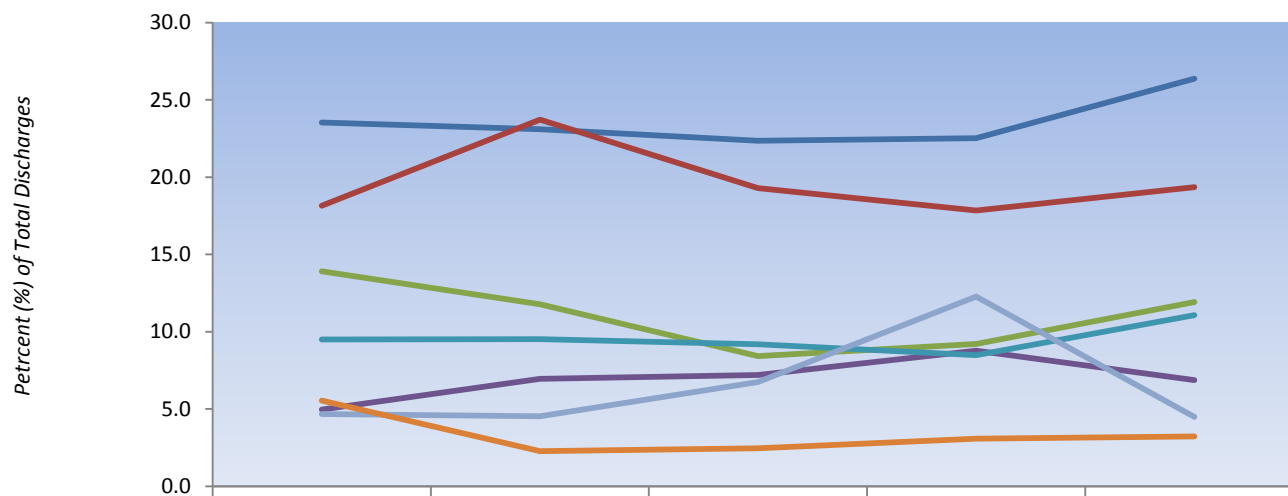
	2008	2009	2010	2011	2012
Schizophrenia	23.5	26.4	22.5	22.9	24.6
Mental and behavioural disorders due to use of cannabinoids	15.0	17.6	14.4	13.8	14.6
Mental and behavioural disorders due to multiple drug use and use of other psychoactive substances	12.5	9.7	7.2	8.5	11.0
Bipolar affective disorder	8.6	11.7	12.3	12.9	10.4
Mental and behavioural disorders due to use of alcohol	9.7	7.7	8.2	8.0	9.5
Acute and transient psychotic disorders	4.0	4.3	6.3	10.8	3.9

N.B. Percent (%) of total discharges represent all discharges except Symptoms, Signs, and Ill-defined conditions, and Factors Influencing Health Status and contact with Health Services.

Source : Keane Information System, Public Hospitals Authority

Prepared By : Health Information and Research Unit, 01/2014

**Trends (%) in Total Discharges for Selected Illnesses, Males
Sandilands Rehabilitation Centre, 2008-2012**



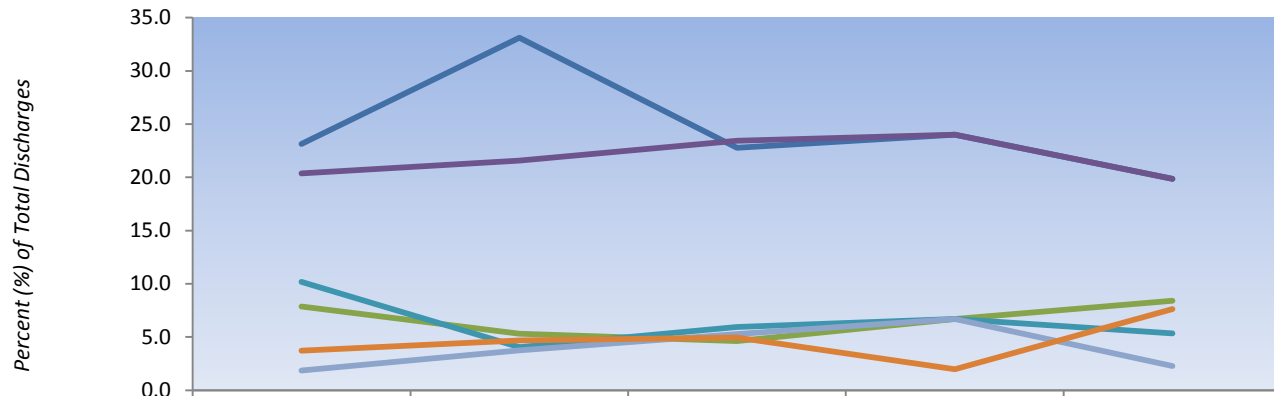
	2008	2009	2010	2011	2012
Schizophrenia	23.5	23.1	22.4	22.5	26.4
Mental and behavioural disorders due to use of cannabinoids	18.2	23.7	19.3	17.8	19.4
Mental and behavioural disorders due to multiple drug use and use of other psychoactive substances	13.9	11.8	8.4	9.2	11.9
Bipolar affective disorder	5.0	6.9	7.2	8.8	6.9
Mental and behavioural disorders due to use of alcohol	9.5	9.5	9.2	8.5	11.1
Acute and transient psychotic disorders	4.7	4.5	6.7	12.3	4.5
Mental and behavioural disorders due to use of cocaine (F14)	5.5	2.3	2.5	3.1	3.2

N.B. Percent (%) of total discharges represent all discharges except Symptoms, Signs, and Ill-defined conditions, and Factors Influencing Health Status and contact with Health Services.

Source : Keane Information System, Public Hospitals Authority

Prepared By : Health Information and Research Unit, 01/2014

**Trends (%) in Total Discharges for Selected Illnesses, Females
Sandilands Rehabilitation Centre, 2008-2012**



	2008	2009	2010	2011	2012
— Schizophrenia	23.1	33.1	22.8	24.0	19.8
— Mental and behavioural disorders due to multiple drug use and use of other psychoactive substances	7.9	5.3	4.6	6.7	8.4
— Bipolar affective disorder	20.4	21.6	23.4	24.0	19.8
— Mental and behavioural disorders due to use of alcohol	10.2	4.1	5.9	6.7	5.3
— Acute and transient psychotic disorders	1.9	3.8	5.3	6.7	2.3
— Depressive episode	3.7	4.7	5.0	2.0	7.6

N.B. Percent (%) of total discharges represent all discharges except Symptoms, Signs, and Ill-defined conditions, and Factors Influencing Health Status and contact with Health Services.

Source : Keane Information System, Public Hospitals Authority

Prepared By : Health Information and Research Unit, 01/2014