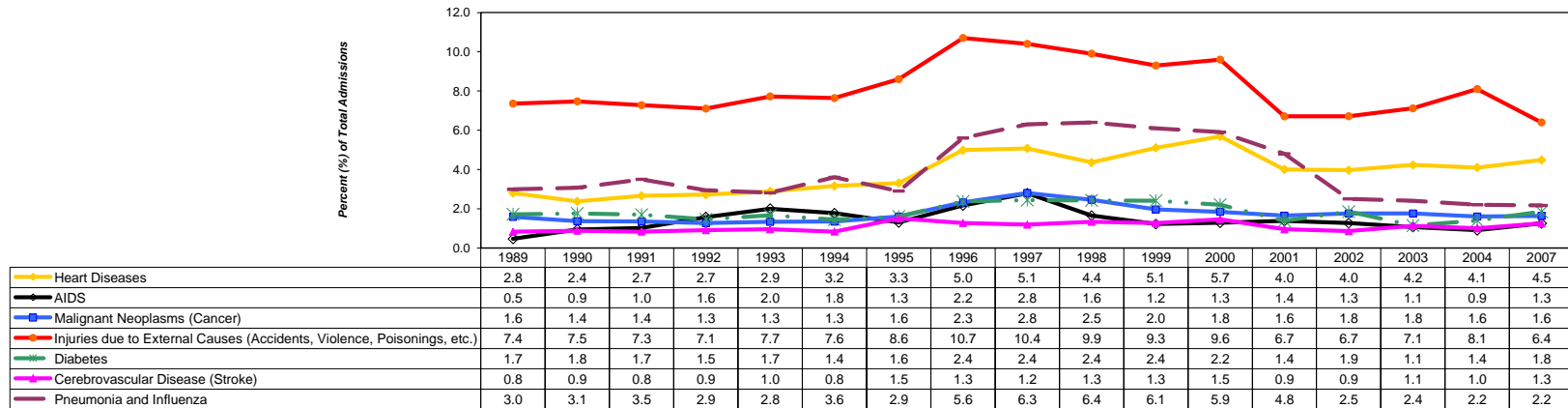


Morbidity (Admissions) Trends for Princess Margaret Hospital and The Rand Memorial Hospital for Selected Conditions, with Number and Percent of Total Admissions, 1989-2004, 2007

	1989		1990		1991		1992		1993		1994		1995		1996		1997		1998		1999		2000		2001		2002		2003		2004		2007	
	PMH	Rand	PMH	Rand	PMH	Rand	PMH	Rand	PMH	Rand	PMH	Rand	PMH	Rand	PMH	Rand	PMH	Rand	PMH	Rand	PMH	Rand	PMH	Rand	PMH	Rand	PMH	Rand	PMH	Rand	PMH	Rand		
Heart Diseases																																		
Number of Admissions	472	127	421	98	471	128	384	177	429	150	522	170	534	131	728	181	766	182	575	196	653	214	757	235	684	209	621	221	658	231	595	259	638	355
Percent (%) of Total Admissions	2.8		2.4		2.7		2.7		2.9		3.2		3.3		5.0		5.1		4.4		5.1		5.7		4.0		4.0		4.2		4.1		4.5	
AIDS																																		
Number of Admissions	92	7	194	12	215	13	320	6	399	3	374	13	236	22	374	21	491	29	262	29	178	29	209	15	296	8	257	11	206	18	180	16	256	22
Percent (%) of Total Admissions	0.5		0.9		1.0		1.6		2.0		1.8		1.3		2.2		2.8		1.6		1.2		1.3		1.4		1.3		1.1		0.9		1.3	
Malignant Neoplasms (Cancer)																																		
Number of Admissions	300	39	248	50	261	43	229	33	235	32	258	36	284	41	365	58	438	85	336	99	264	69	241	81	299	65	303	70	312	57	280	61	312	50
Percent (%) of Total Admissions	1.6		1.4		1.4		1.3		1.3		1.3		1.6		2.3		2.8		2.5		2.0		1.8		1.6		1.8		1.8		1.6		1.6	
Injuries due to External Causes (Accidents, Violence, Poisonings, etc.)																																		
Number of Admissions	1,254	323	1,414	219	1,316	322	1,116	352	1,212	339	1,335	337	1,395	337	1,468	488	1,401	537	1,273	478	1,288	299	1,336	338	1,171	313	1,052	374	1,140	356	1,236	441	1,074	345
Percent (%) of Total Admissions	7.4		7.5		7.3		7.1		7.7		7.6		8.6		10.7		10.4		9.9		9.3		9.6		6.7		6.7		7.1		8.0		6.4	
Diabetes																																		
Number of Admissions	287	81	266	118	246	135	170	131	193	142	224	91	201	121	323	110	324	131	305	124	320	89	288	97	208	99	256	137	148	92	222	79	291	120
Percent (%) of Total Admissions	1.7		1.8		1.7		1.5		1.7		1.4		1.6		2.4		2.4		2.4		2.2		1.9		1.4		1.9		1.1		1.4		1.9	
Cerebrovascular Disease (Stroke)																																		
Number of Admissions	155	22	151	42	140	48	141	46	147	44	134	49	247	51	166	66	175	47	186	50	166	50	186	69	156	54	142	40	183	55	172	44	216	62
Percent (%) of Total Admissions	0.8		0.9		0.8		0.9		1.0		0.8		1.5		1.3		1.2		1.3		1.3		1.5		0.9		0.9		1.1		1.0		1.3	
Pneumonia and Influenza																																		
Number of Admissions	548	91	591	81	718	69	541	66	515	49	713	75	511	72	902	125	1032	150	908	223	695	346	637	386	672	397	389	170	397	119	373	88	330	150
Percent (%) of Total Admissions	3.0		3.1		3.5		2.9		2.8		3.6		2.9		5.6		6.3		6.4		6.1		5.9		4.8		2.6		2.5		2.2		2.2	

Inpatient Morbidity Trends (Percent [%] of Total Admissions) of Selected Conditions
Princess Margaret and Rand Memorial Hospitals
1989-2004, 2007



N.B. 2005-2006 information is not readily available.